

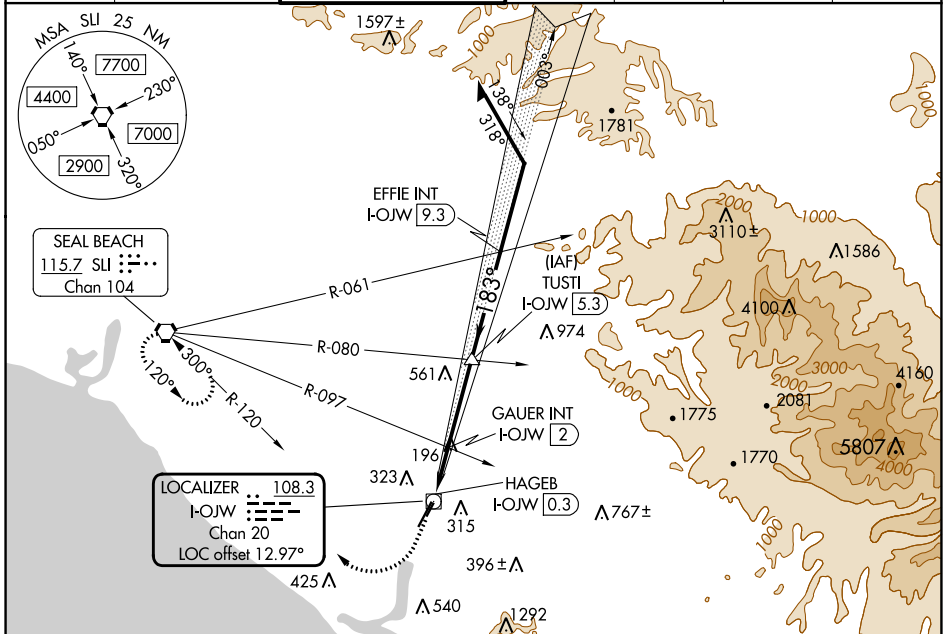
LOC/DME I-OJW 108.3 Chan 20	APP CRS 183°	Rwy Idg TDZE 54 Apt Elev 56
--	------------------------	---

LDA RWY 20R

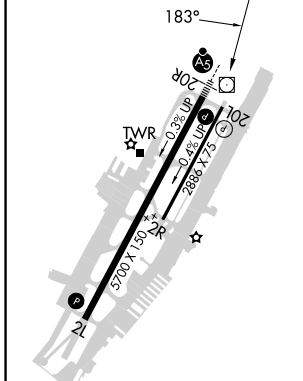
JOHN WAYNE/ORANGE COUNTY (SNA)

DME required.	MALSR AS	MISSED APPROACH: Climb to 1000 then climbing right turn to 3000 direct SLI VORTAC and hold.
▼ Circling Rwy 20L NA at night. For inop ALS, increase S-LDA 20R Cat C/D visibility to RVR 6000.		

D-ATIS 126.0	SOCAL APP CON 121.3 263.1	JOHN WAYNE TOWER ★ 126.8 (CTAF) 0 343.625	GND CON 120.8	CLNC DEL 118.0	CPDLC	UNICOM 122.95
------------------------	-------------------------------------	--	-------------------------	--------------------------	-------	-------------------------



ELEV 56	D	TDZE 54
---------	----------	---------



1000	3000	SLI	TUSTI VGSi and descent angles not coincident (VGSi Angle 3.00/TCH 68). Remain within 10 NM			
			GAUER INT I-OJW 2	EFFIE INT I-OJW 9.3		
			HAGEB I-OJW 0.3			
			0.3	0.8 NM	0.9 NM	3.2 NM

CATEGORY	A	B	C	D
S-LDA 20R	460/24	406 (500-½)	460/40	406 (500-¾)
C CIRCLING	640-1	584 (600-1)	840-2¼ 784 (800-2¼)	1160-3 1104 (1200-3)

SW-3, 31 OCT 2024 to 28 NOV 2024

SW-3, 31 OCT 2024 to 28 NOV 2024