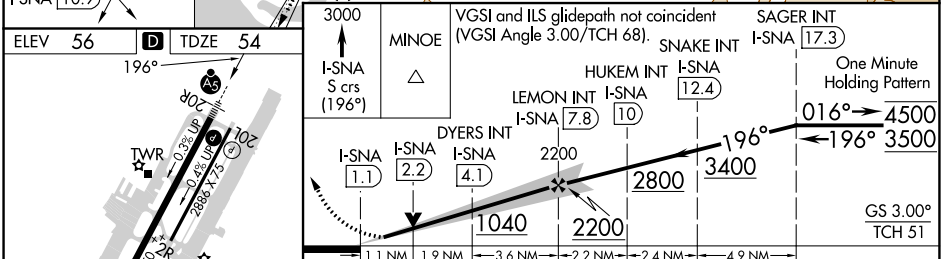
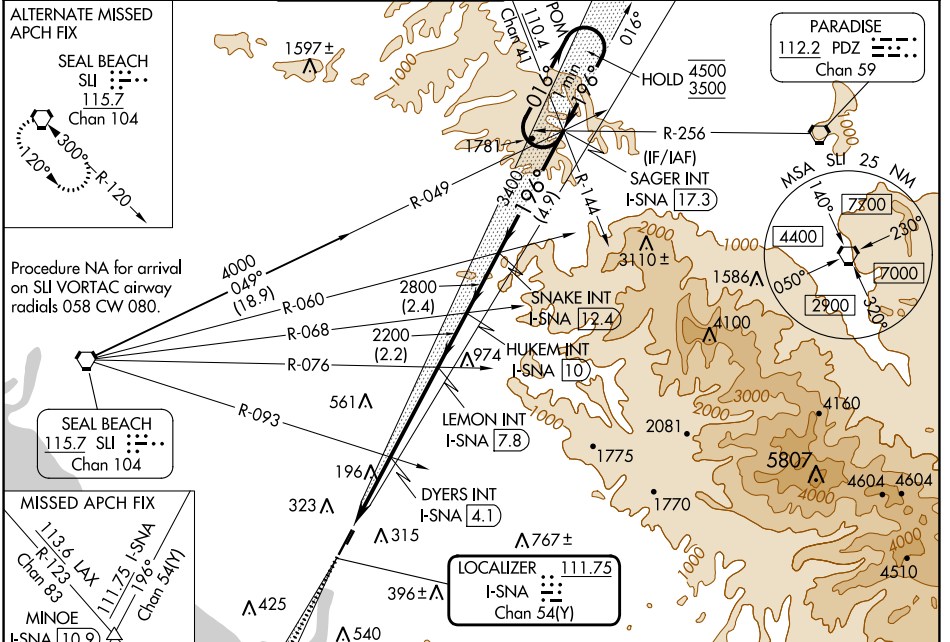


LOC/DME I-SNA 111.75 Chan 54(Y)	APP CRS 196°	Rwy Idg TDZE 54 Apt Elev 56	5700
---	------------------------	---	-------------

ILS or LOC RWY 20R

JOHN WAYNE/ORANGE COUNTY (SNA)

⚠ Circling Rwy 20L NA at night. For inop ALS, increase DYERS fix minimums S-LOC 20R Cat C and D visibility to RVR 6000. *RVR 1800 authorized with the use of FD or AP or HUD to DA.	MALSR 	MISSED APPROACH: Climb to 3000 on I-SNA LOC south course (196°) to MINOE INT/I-SNA 10.9 DME.				
D-ATIS 126.0	SOCAL APP CON 121.3 263.1	JOHN WAYNE TOWER ★ 126.8 (CTAF) 0 343.625	GND CON 120.8	CLNC DEL 118.0	CPDLC	UNICOM 122.95



ELEV 56	TDZE 54	MINOE	VGSI and ILS glidepath not coincident (VGSI Angle 3.00°/TCH 68).	SNAKE INT I-SNA 17.3	SAGER INT I-SNA 17.3
CATEGORY	A	B	C	D	
S-ILS 20R*	255/24 201 (200-½)				
S-LOC 20R	1040/40 986 (1000-¾)	1040/55 986 (1000-1)	1040-2½	986 (1000-2½)	
C CIRCLING	1040-1¼ 984 (1000-1¼)	1040-1½ 984 (1000-½)	1040-3	1160-3 1104 (1200-3)	
DYERS FIX MINIMUMS (DUAL VOR RECEIVERS OR DME REQUIRED)					
S-LOC 20R	460/24 406 (500-½)		460/40 406 (500-¾)		
C CIRCLING	640-1 584 (600-1)		840-2¼ 784 (800-2¼)		1160-3 1104 (1200-3)

SW-3, 31 OCT 2024 to 28 NOV 2024

SW-3, 31 OCT 2024 to 28 NOV 2024