

(HHERO3.HHERO) 22251

JOHN WAYNE/ORANGE COUNTY (SNA)

# HHERO THREE DEPARTURE (RNAV) AL-377 (FAA)

SANTA ANA, CALIFORNIA

D-ATIS  
126.0  
CLNC DEL  
118.0  
CPDLC  
GND CON  
120.8  
SOCAL DEP CON  
128.1 281.4

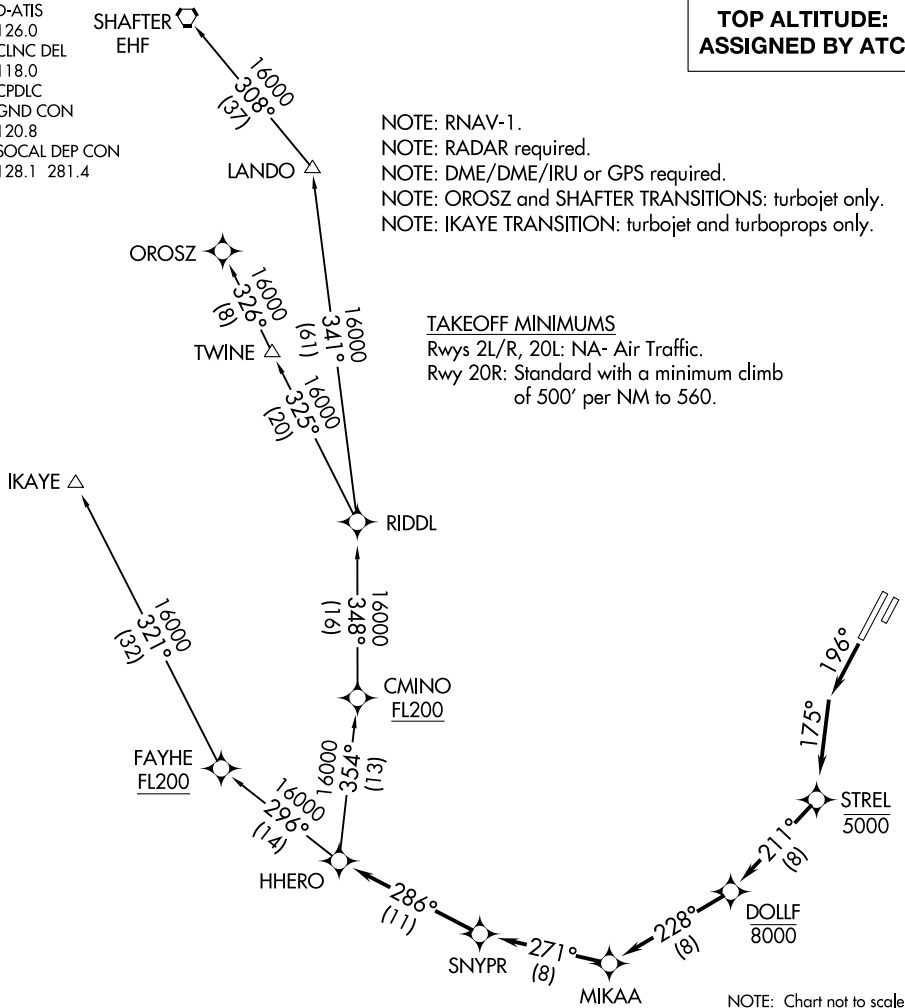
SHAFTER EHF

**TOP ALTITUDE:  
ASSIGNED BY ATC**

NOTE: RNAV-1.  
NOTE: RADAR required.  
NOTE: DME/DME/IRU or GPS required.  
NOTE: OROSZ and SHAFTER TRANSITIONS: turbojet only.  
NOTE: IKAYE TRANSITION: turbojet and turboprops only.

### TAKEOFF MINIMUMS

Rwys 2L/R, 20L: NA- Air Traffic.  
Rwy 20R: Standard with a minimum climb  
of 500' per NM to 560.



SW-3, 31 OCT 2024 to 28 NOV 2024

SW-3, 31 OCT 2024 to 28 NOV 2024

NOTE: Chart not to scale.

### DEPARTURE ROUTE DESCRIPTION

TAKEOFF RUNWAY 20R: Climb heading 196° to intercept course 175° to cross STREL at or below 5000, then on track 211° to cross DOLLF at or below 8000, then on depicted route to HHERO, thence. . . .

. . . .(transition). Maintain altitude assigned by ATC. Expect filed altitude 10 minutes after departure.

IKAYE TRANSITION (HHERO3.IKAYE)

OROSZ TRANSITION (HHERO3.OROSZ)

SHAFTER TRANSITION (HHERO3.EHF)

# HHERO THREE DEPARTURE (RNAV)

(HHERO3.HHERO) 19JUL18

SANTA ANA, CALIFORNIA  
JOHN WAYNE/ORANGE COUNTY (SNA)