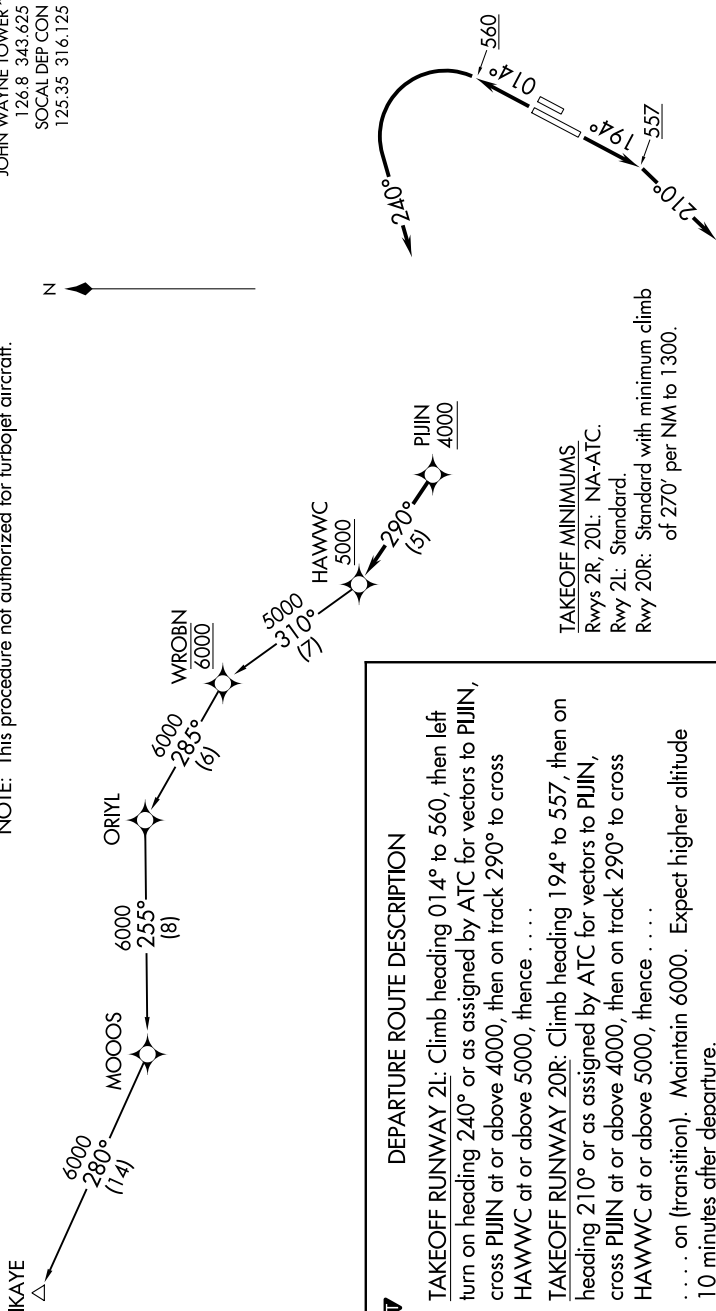


HAWWC THREE DEPARTURE (RNAV)

D-ATIS 126.0
 CLNC DEL 118.0
 CPDLC
 GND CON 120.8
 JOHN WAYNE TOWER* 126.8 343.625
 SOCAL DEP CON 125.35 316.125

NOTE: RADAR required.
 NOTE: RNAV 1.
 NOTE: DME/DME/IRU or GPS required.
 NOTE: This procedure not authorized for turbojet aircraft.



TOP ALTITUDE:
6000

DEPARTURE ROUTE DESCRIPTION

TAKEOFF RUNWAY 2L: Climb heading 014° to 560, then left turn on heading 240° or as assigned by ATC for vectors to PIJIN, cross PIJIN at or above 4000, then on track 290° to cross HAWWC at or above 5000, thence

TAKEOFF RUNWAY 20R: Climb heading 194°, then on heading 210° or as assigned by ATC for vectors to PIJIN, cross PIJIN at or above 4000, then on track 290° to cross HAWWC at or above 5000, thence

. . . . on (transition). Maintain 6000. Expect higher altitude 10 minutes after departure.

TAKEOFF MINIMUMS
 Rwy 2R, 20L: NA-ATC.
 Rwy 2L: Standard.
 Rwy 20R: Standard with minimum climb of 270' per NM to 1300.

NOTE: Chart not to scale.

IKAYE TRANSITION (HAWWC3.IKAYE)