

(SEGUL1.SEGUL) 24193

# SEGUL ONE DEPARTURE (RNAV)

SAN FRANCISCO INTL (SFO)

SAN FRANCISCO, CALIFORNIA

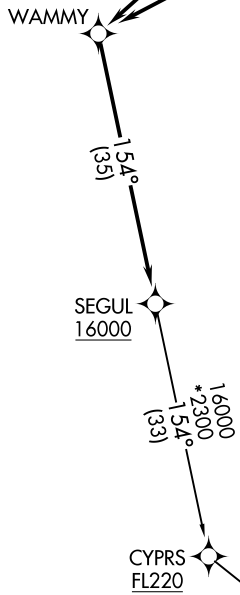
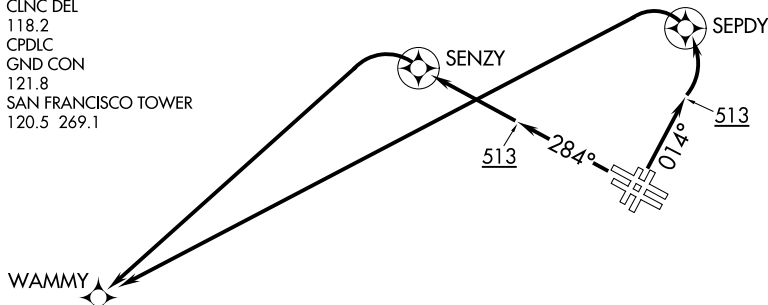
AL-375 (FAA)

RNAV 1 - DME/DME/IRU or GPS.

RADAR required for non-GPS equipped aircraft.

NORCAL DEP CON  
 135.1 307.2  
 D-ATIS  
 113.7 115.8 118.85  
 CLNC DEL  
 118.2  
 CPDLC  
 GND CON  
 121.8  
 SAN FRANCISCO TOWER  
 120.5 269.1

**TOP ALTITUDE:  
 ASSIGNED BY ATC**



**DEPARTURE ROUTE DESCRIPTION**

**TAKEOFF RUNWAYS 1L/R:** Climb on heading 014° to 513, then left turn direct SEPDY, then left turn direct WAMMY, then on track 154° to cross SEGUL at or above 16000, thence . . . .

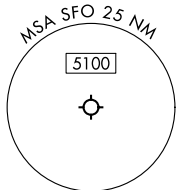
**TAKEOFF RUNWAYS 28L/R:** Climb on heading 284° to 513, then direct SENZY, then left turn direct WAMMY, then on track 154° to cross SEGUL at or above 16000, thence . . . .

. . . . on YYUNG Transition. Maintain ATC assigned altitude, expect filed altitude 10 minutes after departure.

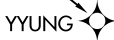
YYUNG TRANSITION (SEGUL1.YYUNG)

**TAKEOFF MINIMUMS**  
 Rwy 10L/R, 19L/R: NA - ATC  
 Rwy 1L/R: Standard with minimum climb of 500'/NM to 513 then 353'/NM to 2100.  
 Rwy 28L: Standard with minimum climb of 353'/NM to 1200.  
 Rwy 28R: Standard with minimum climb of 361'/NM to 1100.

FL220  
 \*1700  
 115°  
 (86)



NOTE: Turbojet aircraft only.  
 NOTE: Chart not to scale.



# SEGUL ONE DEPARTURE (RNAV)

(SEGUL1.SEGUL) 11 JUL 24

SAN FRANCISCO, CALIFORNIA

SAN FRANCISCO INTL (SFO)

SW-2, 31 OCT 2024 to 28 NOV 2024

SW-2, 31 OCT 2024 to 28 NOV 2024