

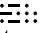
(SFO4.SFO) 23334

SAN FRANCISCO FOUR DEPARTURE

AL-375 (FAA)

SAN FRANCISCO INTL (SFO)
SAN FRANCISCO, CALIFORNIA

**TOP ALTITUDE:
ASSIGNED BY ATC**

RED BLUFF
115.7 RBL 
Chan 104

D-ATIS
113.7 115.8 118.85
CPDLC
GND CON
121.8
SAN FRANCISCO TOWER
120.5 269.1
NORCAL DEP CON
120.9 323.2

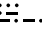
TAKEOFF MINIMUMS


Rwys 1L/R: Standard.

Rwys 28L/R: Standard with a minimum climb of 351' per NM to 1300.

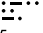
NOTE: RADAR required.

NOTE: Rwys 1L/R: DME required.

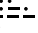
SACRAMENTO
115.2 SAC 
Chan 99

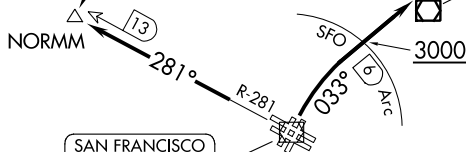
SAUSALITO
116.2 SAU 
Chan 109

CONCORD
117.0 CCR 
Chan 117

LINDEN
114.8 LIN 
Chan 95

OAKLAND
116.8 OAK 
Chan 115

SAN FRANCISCO
115.8 SFO 
Chan 105



SW-2, 31 OCT 2024 to 28 NOV 2024

SW-2, 31 OCT 2024 to 28 NOV 2024

NOTE: Chart not to scale.



DEPARTURE ROUTE DESCRIPTION

TAKEOFF RUNWAYS 1L/R: Climbing right turn heading 033° or ATC assigned heading to cross SFO 6 DME at or above 3000 for RADAR vectors to assigned route/fix. Expect further clearance to filed altitude 10 minutes after departure.

TAKEOFF RUNWAYS 28L/R: Climb on SFO VOR/DME R-281 to NORMM INT/SFO 13 DME; then expect RADAR vectors to assigned route/fix. Expect further clearance to filed altitude 10 minutes after departure.

LOST COMMUNICATIONS:

If not in contact with departure control after reaching 3000, continue climb to filed altitude and proceed direct to assigned route/fix.

SAN FRANCISCO FOUR DEPARTURE

(SFO4.SFO) 15SEP16

SAN FRANCISCO, CALIFORNIA
SAN FRANCISCO INTL (SFO)