

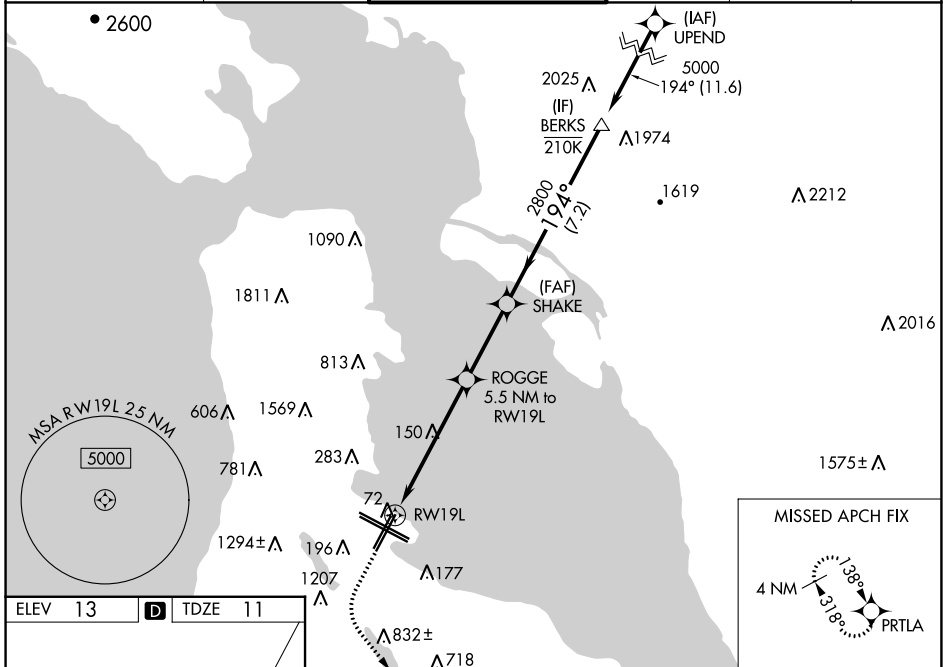
WAAS CH <b>58015</b> <b>W19A</b>	APP CRS <b>194°</b>	Rwy Idg TDZE Apt Elev	<b>8650</b> <b>11</b> <b>13</b>
--	------------------------	-----------------------------	---------------------------------------

# RNAV (GPS) RWY 19L

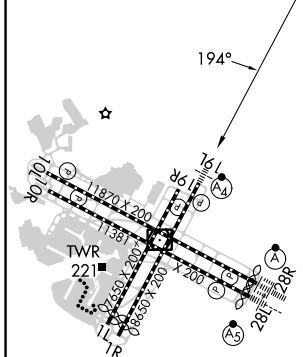
SAN FRANCISCO INTL (SFO)

RNP APCH - GPS.	MALSF	MISSED APPROACH: Climb to 1100 then climbing left turn to 4000 direct PRTLA and hold. *Missed approach requires minimum climb of 357 feet per NM to 2000.
<p>⚠ For uncompensated Baro-VNAV systems, LNAV/VNAV NA below 4°C or above 54°C. For inop ALS, increase LPV DA* (CG 357) all Cats visibility to RVR 4500. For inop ALS, increase LNAV/VNAV all Cats visibility to 2½ SM and LNAV Cats C and D visibility to 3 SM.</p>		

D-ATIS <b>113.7 115.8 118.85</b>	NORCAL APP CON <b>134.5 338.2</b>	SAN FRANCISCO TOWER <b>120.5 269.1</b>	GND CON <b>121.8</b>	CLNC DEL <b>118.2</b>	CPDLC
-------------------------------------	--------------------------------------	---	-------------------------	--------------------------	-------



ELEV 13	<b>D</b>	TDZE 11
---------	----------	---------



1100	4000	PRTLA	BERKS
VGSI and RNAV glidepath not coincident (VGSI Angle 3.00°/TCH 71°).			
RWY 19L	3.2 NM to RWY 19L	ROGGE 5.5 NM to RWY 19L	SHAKE
	1800	2800	5000
	3.2 NM	2.3 NM	3.1 NM
			7.2 NM
			GP 3.00° TCH 55

CATEGORY	A	B	C	D
LPV DA*		293/40	282 (300-¾)	
LPV DA		656-1½	645 (700-1½)	
LNAV/VNAV DA*		350/40	339 (400-¾)	
LNAV/VNAV DA		794-2	783 (800-2)	
LNAV MDA	1100/55 1089 (1100-1)	1100-1¼ 1089 (1100-1¼)	1100-2½	1089 (1100-2½)

TDZ/CL Rwy 19L and 28R  
REIL Rwy 1L, 1R and 10L  
HIRL all Rwy