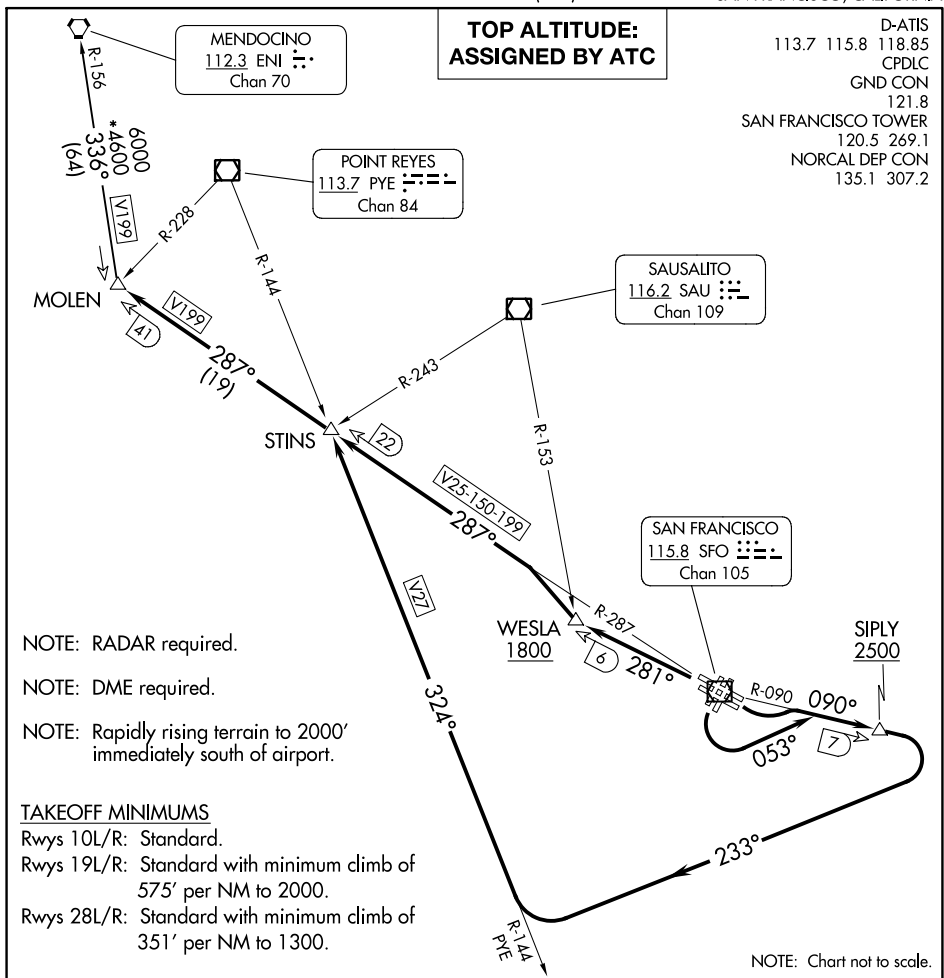


(MOLEN9.MOLEN) 23334

MOLEN NINE DEPARTURE

AL-375 (FAA)

SAN FRANCISCO INTL (SFO)
SAN FRANCISCO, CALIFORNIA



NOTE: RADAR required.

NOTE: DME required.

NOTE: Rapidly rising terrain to 2000' immediately south of airport.

TAKEOFF MINIMUMS

Rwys 10L/R: Standard.

Rwys 19L/R: Standard with minimum climb of 575' per NM to 2000.

Rwys 28L/R: Standard with minimum climb of 351' per NM to 1300.

NOTE: Chart not to scale.

DEPARTURE ROUTE DESCRIPTION

TAKEOFF RUNWAYS 10L/R: Climbing left turn to intercept SFO R-090 to cross SIPLY 7 DME FIX at or above 2500, then climbing right turn heading 233° to intercept and proceed on PYE R-144 to STINS INT/SFO 22 DME, then on SFO VOR/DME R-287 to MOLEN INT/SFO 41 DME. Thence

TAKEOFF RUNWAYS 19L/R: Climbing left turn to heading 053° to intercept SFO R-090 to cross SIPLY 7 DME FIX at or above 2500, then climbing right turn heading 233° to intercept and proceed on PYE R-144 to STINS INT/SFO VOR/DME 22 DME, then on SFO VOR/DME R-287 to MOLEN INT/SFO 41 DME. Thence

TAKEOFF RUNWAYS 28 L/R: Climb on SFO VOR/DME R-281 to cross WESLA INT/SFO VOR/DME 6 DME at or above 1800 then climbing right turn to intercept SFO R-287 to MOLEN INT/SFO 41 DME. Thence

. . . . (transition). Expect clearance to filed altitude 10 minutes after departure.

MENDOCINO TRANSITION (MOLEN9.ENI): From over MOLEN INT on ENI R-156 to ENI VORTAC.

MOLEN NINE DEPARTURE

(MOLEN9.MOLEN) 27JAN22

SAN FRANCISCO, CALIFORNIA
SAN FRANCISCO INTL (SFO)

SW-2, 31 OCT 2024 to 28 NOV 2024

SW-2, 31 OCT 2024 to 28 NOV 2024