

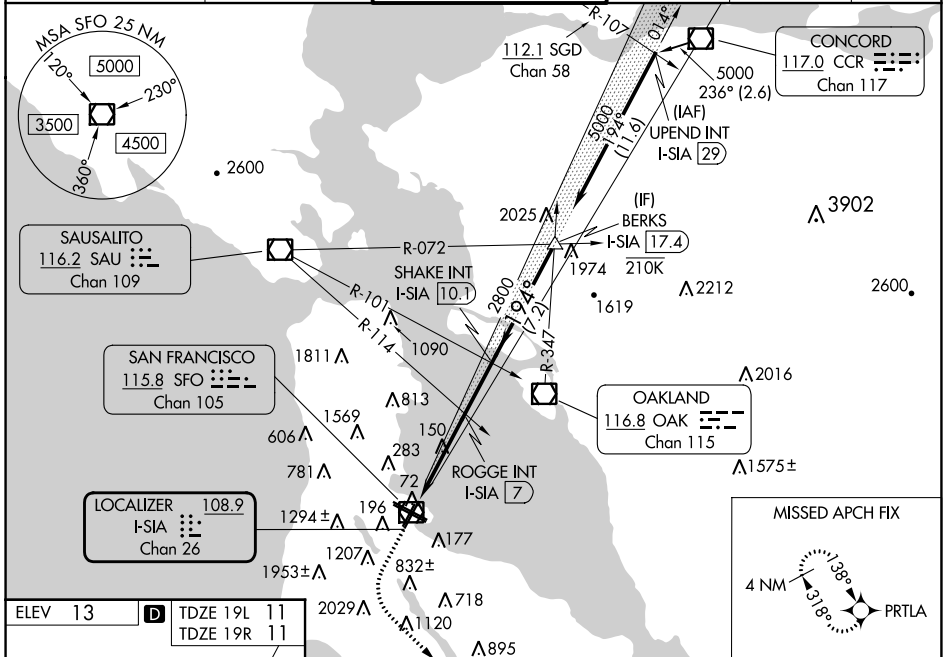
LOC/DME I-SIA 108.9 Chan 26	APP CRS 194°	Rwy Idg 19L 19R TDZE 11 11 Apt Elev 13 13
---	------------------------	--

ILS or LOC RWY 19L

SAN FRANCISCO INTL (SFO)

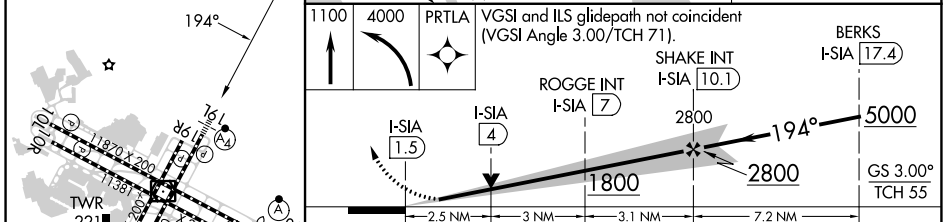
RNP APCH - GPS.	MALSFWy 19L	MISSED APPROACH: Climb to 1100 then climbing left turn to 4000 direct to PRTLA and hold. *Missed approach requires minimum climb of 357 feet per NM to 2000.
-----------------	-------------	---

D-ATIS 113.7 115.8 118.85	NORCAL APP CON 134.5 338.2	SAN FRANCISCO TOWER 120.5 269.1	GND CON 121.8	CLNC DEL 118.2	CPDLC
-------------------------------------	--------------------------------------	---	-------------------------	--------------------------	-------



SW-2, 11 JUL 2024 to 08 AUG 2024

SW-2, 11 JUL 2024 to 08 AUG 2024



CATEGORY	A	B	C	D
S-ILS 19L*	300/40	289 (300-3/4)		
S-ILS 19L	774-2	763 (800-2)		
S-LOC 19L	1800-1 1/4 1789 (1800-1 1/4)	1800-1 1/2 1789 (1800-1 1/2)	1800-3	1789 (1800-3)
ROGGE FIX MINIMUMS (DUAL VOR RECEIVERS OR DME REQUIRED)				
S-LOC 19L	880/40 869 (900-3/4)	880/55 869 (900-1)	880-2 1/2	869 (900-2 1/2)
SIDESTEP 19R	880-2	869 (900-2)	880-3	869 (900-3)