

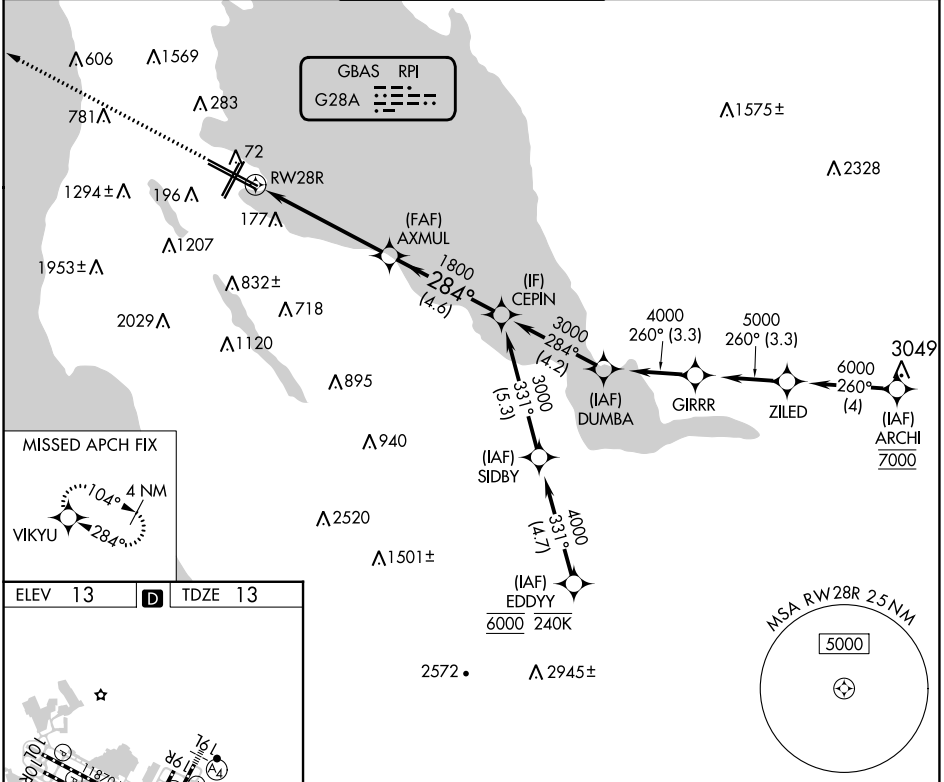
| | | |
|--|------------------------|--|
| GBAS CH 20626 G28A | APP CRS 284° | Rwy Idg 11236 TDZE 13 Apt Elev 13 |
|--|------------------------|--|

GLS RWY 28R

SAN FRANCISCO INTL (SFO)

| | | | | | |
|--|--|------------|--|--|--|
| RNP APCH-GPS. | | ALSF-2 | MISSED APPROACH: Climb to 3200 direct VIKYU and hold. *Missed approach requires minimum climb of 350 feet per NM to 1900; if unable to meet climb gradient, see RNAV (GPS) Z RWY 28R. | | |
| Simultaneous approach authorized. Simultaneous operations require use of vertical guidance; maintain last assigned altitude until established on glidepath. Use of FD or AP required during simultaneous operations. Autopilot coupled approach NA below 213 feet. | | | | | |

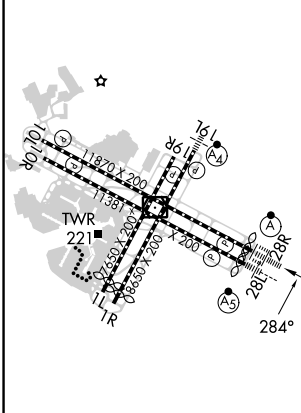
| | | | | | |
|---|--------------------------------------|---|-------------------------|--------------------------|-------|
| D-ATIS 113.7 115.8 118.85 | NORCAL APP CON 134.5 338.2 | SAN FRANCISCO TOWER 120.5 269.1 | GND CON 121.8 | CLNC DEL 118.2 | CPDLC |
|---|--------------------------------------|---|-------------------------|--------------------------|-------|



SW-2, 11 JUL 2024 to 08 AUG 2024

SW-2, 11 JUL 2024 to 08 AUG 2024

| | | |
|---------|----------|---------|
| ELEV 13 | D | TDZE 13 |
|---------|----------|---------|



HIRL all Rwys
TDZ/CL Rwys 19L and 28R
REIL Rwys 1L, 1R and 10L

| | | | | |
|----------|----------------------|---|------|--------|
| 3200 | VIKYU | VGSI and GLS glidepath not coincident (VGSI Angle 3.00/TCH 68). | | CEPIN |
| | | AXMUL | | |
| | | 1800 | 284° | 3000 |
| | | | 1800 | |
| | | 5.4 NM | | 4.6 NM |
| CATEGORY | A | B | C | D |
| GLS DA* | 213/18 200 (200-1/2) | | | |