

GBAS CH <b>21859</b> <b>G19B</b>	APP CRS <b>194°</b>	Rwy Idg TDZE Apt Elev	<b>7650</b> <b>11</b> <b>13</b>
--	------------------------	-----------------------------	---------------------------------------

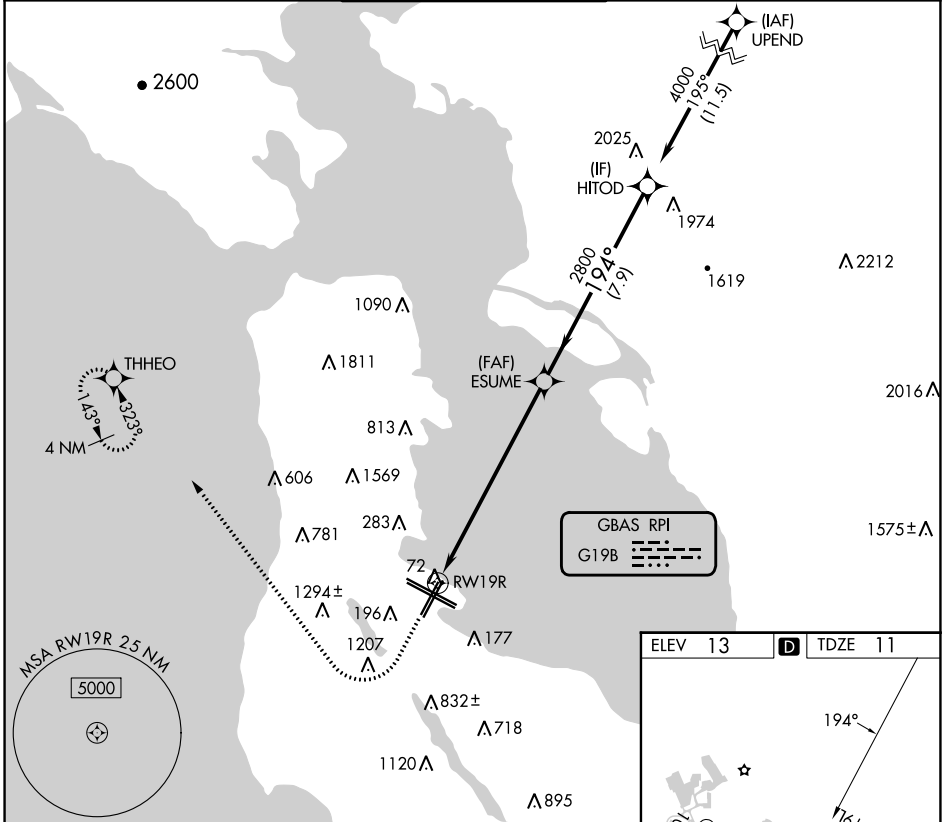
# GLS RWY 19R

SAN FRANCISCO INTL (SFO)

RNP APCH-GPS.
NA Autopilot coupled approach NA below 321 feet.

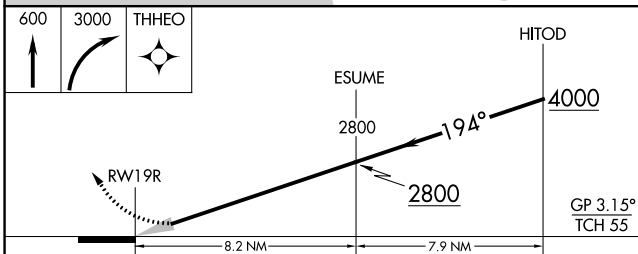
MISSED APPROACH: Climb to 600 then climbing right turn to 3000 direct THHEO and hold. Missed approach requires minimum climb of 395 feet per NM to 2100.

D-ATIS <b>113.7 115.8</b> <b>118.85</b>	NORCAL APP CON <b>134.5 338.2</b>	SAN FRANCISCO TOWER <b>120.5 269.1</b>	GND CON <b>121.8</b>	CLNC DEL <b>118.2</b>	CPDLC
---	--------------------------------------	---	-------------------------	--------------------------	-------

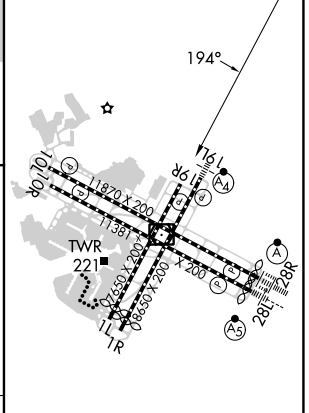


SW-2, 11 JUL 2024 to 08 AUG 2024

SW-2, 11 JUL 2024 to 08 AUG 2024



ELEV 13	<b>D</b> TDZE 11
---------	------------------



CATEGORY	A	B	C	D
GLS DA		321/45	310 (400-7/8)	

TDZ/CL Rwy 19L and 28R  
REIL Rwy 1L, 1R and 10L  
HIRL all Rwy