

# GAP SEVEN DEPARTURE

AL-375 (FAA)

SAN FRANCISCO INTL (SFO)  
SAN FRANCISCO, CALIFORNIA

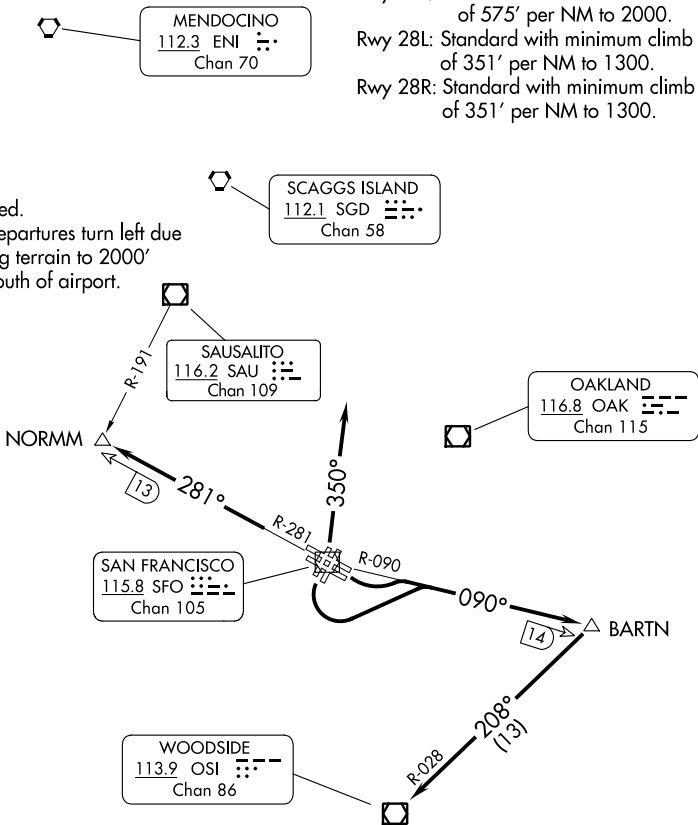
D-ATIS  
113.7 115.8 118.85  
CPDLC  
GND CON  
121.8  
SAN FRANCISCO TOWER  
120.5 269.1  
NORCAL DEP CON  
120.9 323.2 (NW-E)  
135.1 307.2 (SE-W)

### TAKEOFF MINIMUMS

Rwy 19L/R: Standard with minimum climb of 575' per NM to 2000.  
Rwy 28L: Standard with minimum climb of 351' per NM to 1300.  
Rwy 28R: Standard with minimum climb of 351' per NM to 1300.

NOTE: RADAR required.

NOTE: Rwsy 19L/R departures turn left due to steeply rising terrain to 2000' immediately south of airport.



NOTE: Chart not to scale.

### DEPARTURE ROUTE DESCRIPTION

**TAKEOFF RUNWAYS 1L/R:** Climb on SFO R-350 (or as assigned) for vectors to assigned route/fix. Thence . . . .

**TAKEOFF RUNWAYS 10L/R and 19L/R:** Turn left and climb on the SFO R-090 and OSI R-028 to OSI VOR/DME; expect vector to assigned route/fix after OSI VOR/DME. Thence . . . .

**TAKEOFF RUNWAYS 28L/R:** Climb on the SFO VOR/DME R-281 to NORMMM INT/ SFO VOR/DME 13 DME; expect vector to assigned route/fix after NORMMM INT. Thence . . . .

. . . .expect further clearance to filed altitude 10 minutes after departure.

# GAP SEVEN DEPARTURE

SW-2, 08 AUG 2024 to 05 SEP 2024

SW-2, 08 AUG 2024 to 05 SEP 2024