

(BSR.BSR3) 23334

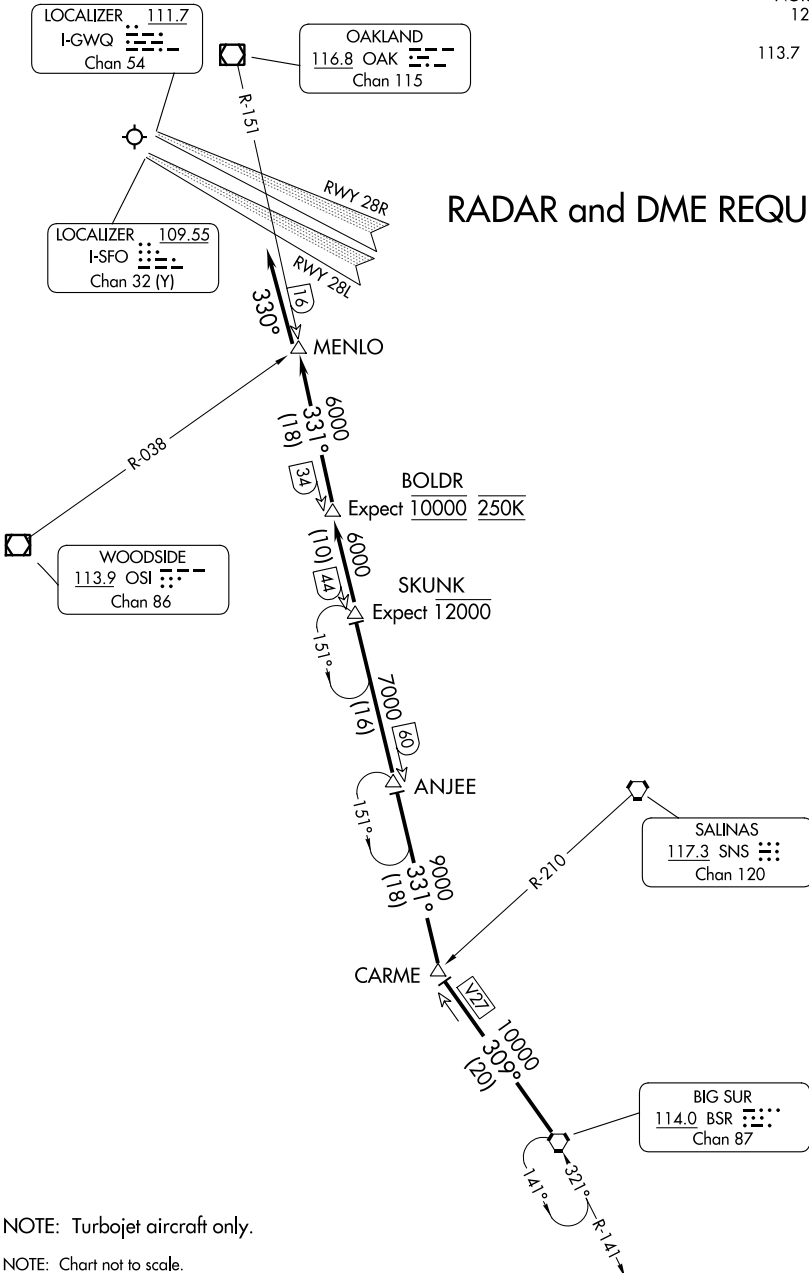
BIG SUR THREE ARRIVAL

AL-375 (FAA)

SAN FRANCISCO INTL (SFO)
SAN FRANCISCO, CALIFORNIA

OAKLAND CENTER
125.45 307.3
NORCAL APP CON
128.575 254.25
D-ATIS
113.7 115.8 118.85

RADAR and DME REQUIRED



NOTE: Turboprop aircraft only.

NOTE: Chart not to scale.

BIG SUR THREE ARRIVAL

(BSR.BSR3) 15SEP16

SAN FRANCISCO, CALIFORNIA
SAN FRANCISCO INTL (SFO)

SW-2, 31 OCT 2024 to 28 NOV 2024

SW-2, 31 OCT 2024 to 28 NOV 2024