

(TJANO1.TJANO) 24053

AL-372 (FAA)

STINSON MUNI (SSF)  
SAN ANTONIO, TEXAS

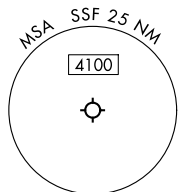
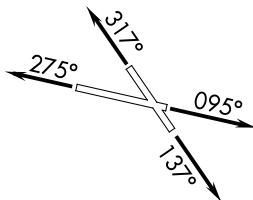
# TJANO ONE DEPARTURE (RNAV)

SAN ANTONIO DEP CON  
125.7 290.225  
ATIS  
128.8  
CLNC DEL (When twr closed)  
121.7  
GND CON  
121.7 379.9  
STINSON TOWER\*  
118.2 379.9

RNAV 1 - DME/DME IRU or GPS.

RADAR required.

**TOP ALTITUDE:  
ASSIGNED BY ATC**



LVACA  
5000

NOTE: For non-GPS equipped aircraft,  
THX and SAT DME must be operational.

TJANO

### TAKEOFF MINIMUMS

- Rwy 9: Standard with minimum climb of 230'/NM to 1900.
- Rwy 14: Standard with minimum climb of 220'/NM to 1900.
- Rwy 27: 300-1% or standard with minimum climb of 230'/NM to 900, or alternatively, with standard takeoff minimums and a normal 200'/NM climb gradient, takeoff must occur no later than 1800' prior to DER.
- Rwy 32: Standard with minimum climb of 230'/NM to 1700.

TEEPY

### DEPARTURE ROUTE DESCRIPTION

TAKEOFF RUNWAY 9: Climb on heading 095° or as assigned by ATC, for vectors to LVACA, thence. . .

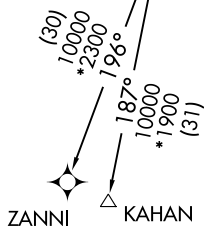
TAKEOFF RUNWAY 14: Climb on heading 137° or as assigned by ATC, for vectors to LVACA, thence. . .

TAKEOFF RUNWAY 27: Climb on heading 275° or as assigned by ATC, for vectors to LVACA, thence. . .

TAKEOFF RUNWAY 32: Climb on heading 317° or as assigned by ATC, for vectors to LVACA, thence. . .

. . .on track 205° to TJANO, then on Transition.  
Maintain ATC assigned altitude.

KAHAN TRANSITION (TJANO1.KAHAN)  
ZANNI TRANSITION (TJANO1.ZANNI)



Note: Chart not to scale.

TJANO ONE DEPARTURE (RNAV)  
(TJANO1.TJANO) 25JAN24

SAN ANTONIO, TEXAS  
STINSON MUNI (SSF)

SC-3, 31 OCT 2024 to 28 NOV 2024