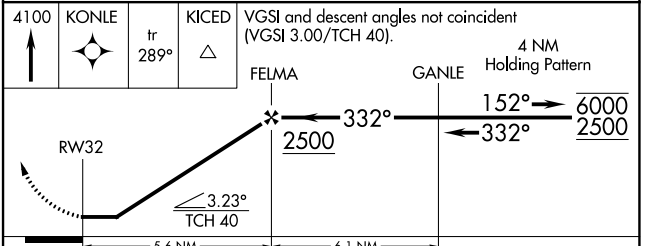
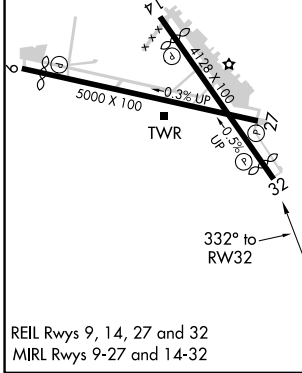
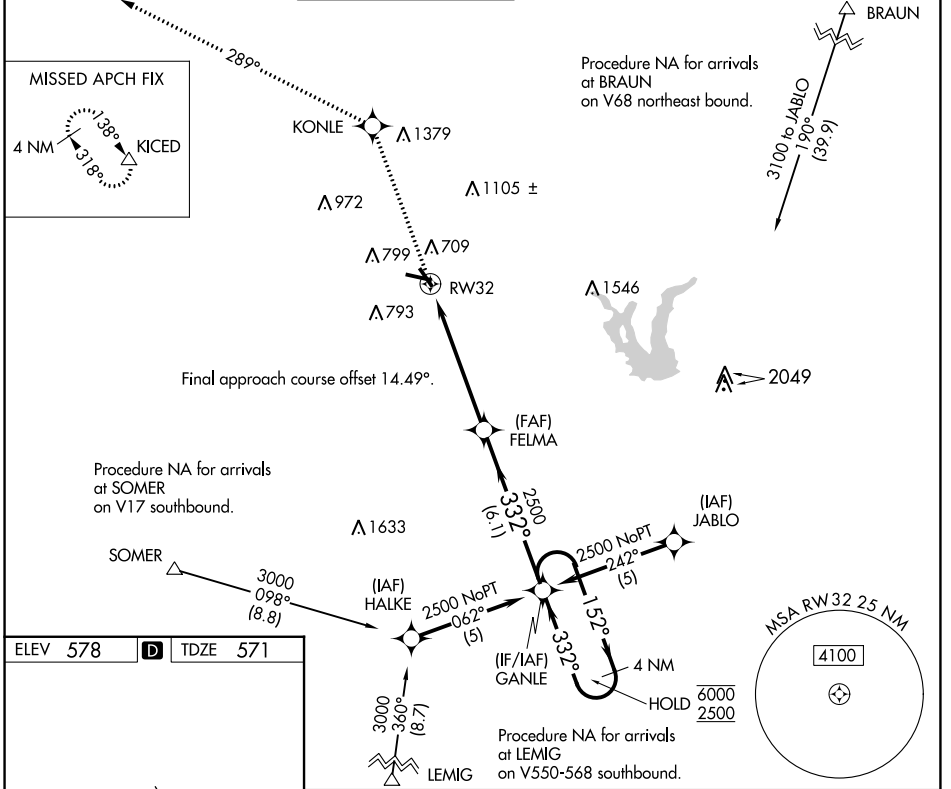


APP CRS 332°	Rwy Idg TDZE Apt Elev	3530 571 578
------------------------	-----------------------------	-----------------------------------------

RNAV (GPS) RWY 32

STINSON MUNI (SSF)

RNP APCH-GPS.		MISSED APPROACH: Climb to 4100 direct KONLE and on track 289° to KICED and hold.			
ATIS 128.8	SAN ANTONIO APP CON 125.7 290.225	STINSON TOWER ★ 118.2 (CTAF) 379.9	GND CON 121.7 379.9	CLNC DEL 121.7 (When twr closed)	UNICOM 122.95



CATEGORY	A	B	C	D
LNAV MDA	1020-1	449 (500-1)	1020-1 3/8 449 (500-1 3/8)	NA
CIRCLING	1040-1 462 (500-1)	1120-1 542 (600-1)	1260-2 682 (700-2)	NA

SC-3, 31 OCT 2024 to 28 NOV 2024

SC-3, 31 OCT 2024 to 28 NOV 2024