

# TACAN Y RWY 16

TACAN KSY Chan 57	APCH CRS 151°	Rwy Ldg 11,550 TDZE 690 Arpt Elev 690
----------------------	------------------	--

AL-371 [USAF]

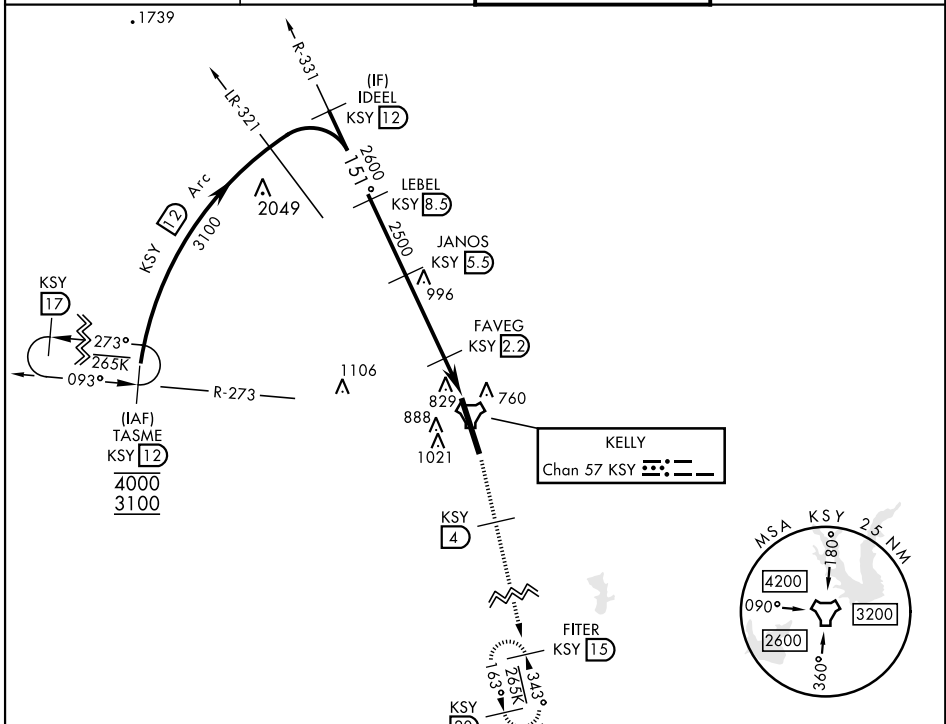
KELLY FLD (KSKF)

▼ \* When ALS inop, increase CAT AB RVR to 55 and vis to 1 mile, CAT CDE RVR to 60 and vis to 1½ miles.  
 \*\* Circling not authorized E of Rwy 16-34.



MISSED APPROACH: Climb on 2500 via KSY R-163 until 4 DME, then climb to 3000 to FITER/ 15 DME and hold.

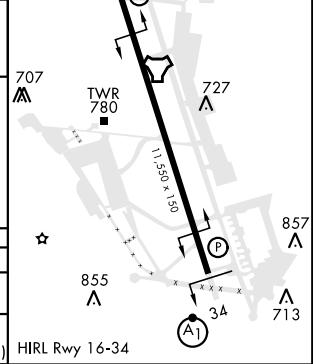
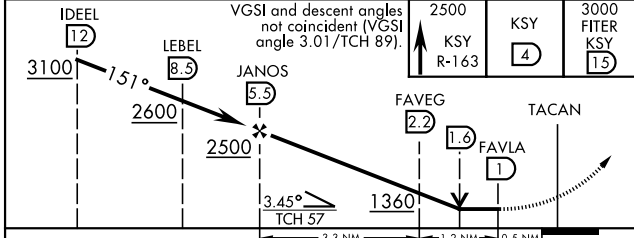
ATIS <b>120.45 273.5</b>	SAN ANTONIO APP CON <b>118.05 353.5</b>	TOWER <b>124.3 322.35</b>	GND CON <b>121.8 289.4</b>
-----------------------------	--	------------------------------	-------------------------------



EMERG SAFE ALT 100 NM 4200

IDEEL 12	LEBEL 8.3	JANOS 5.3	FAVEG 2.2	FAVLA 1	TACAN
3100	2600	2500	2500	1360	
151°		3.45°		TCH 57	
3.3 NM		1.2 NM		0.5 NM	

ELEV 690	TDZE 690
----------	----------



CATEGORY	A	B	C	D	E
S-16 *	1100/24 410 (500-½)		1100/40 410 (500-¾)		
CIRCLING **	1200-1 510 (600-1)	1280-1 590 (600-1)	1340-1¾ 650 (700-1¾)	1400-2¼ 710 (800-2¼)	1900-3 1210 (1300-3)

# TACAN Y RWY 16

SC-3, 31 OCT 2024 to 28 NOV 2024

SC-3, 31 OCT 2024 to 28 NOV 2024