

ILS or LOC/DME Y RWY 34

LOC I-OSQ 110.7	APCH CRS 338°	Rwy Ldg 11,550 TDZE 660 Arprt Elev 690
---------------------------	-------------------------	---

[USAF]

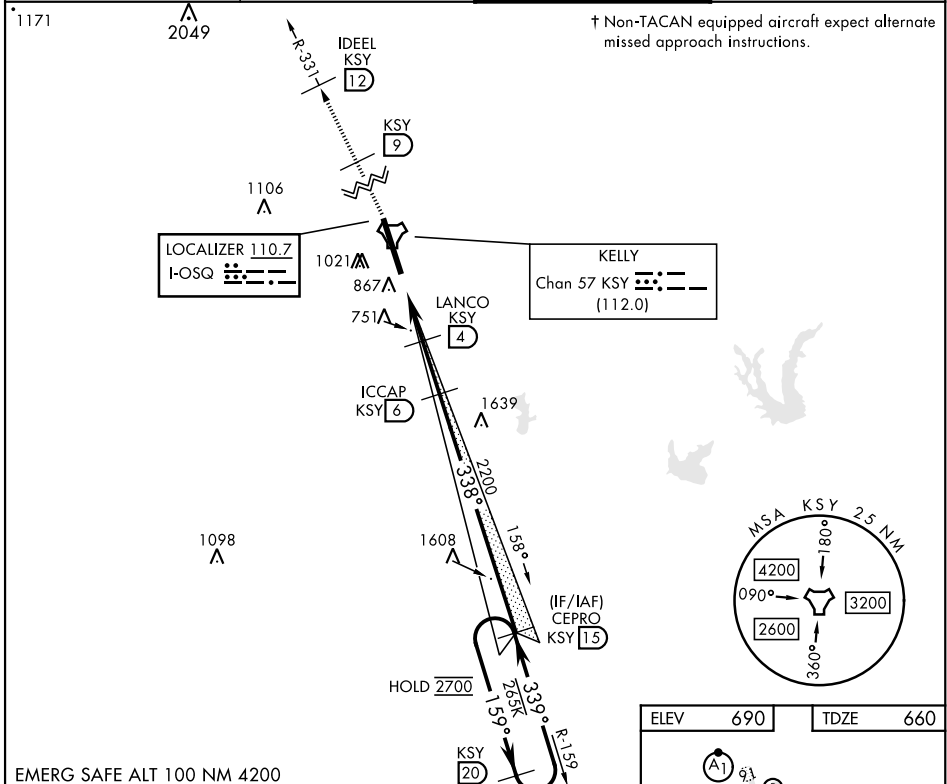
KELLY FLD (KSKF)

▼ * When ALS inop, increase RVR to 40 and vis to ¾ mile.
 ** When ALS inop, increase RVR to 55 and vis to 1 mile.
 *** Circling not authorized E of Rwy 16-34.



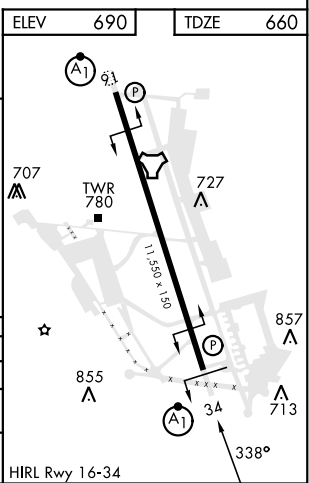
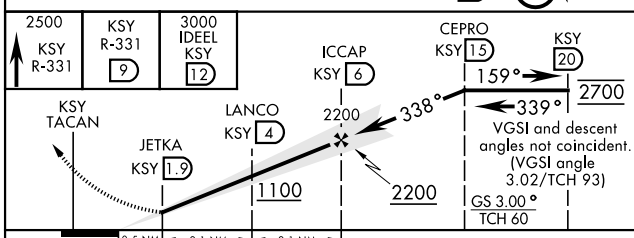
† MISSED APPROACH: Climb to 2500 via KSY TACAN R-331 until 9 DME, cross 9 DME at 2500, then continue climb to 3000 to IDEEL/12 DME. Expect ATC instructions.

ATIS 120.45 273.5	SAN ANTONIO APP CON 118.05 353.5	TOWER 124.3 322.35	GND CON 121.8 289.4
-----------------------------	--	------------------------------	-------------------------------



† Non-TACAN equipped aircraft expect alternate missed approach instructions.

EMERG SAFE ALT 100 NM 4200



CATEGORY	A	B	C	D	E
S-ILS 34*	860/24		200	(200-½)	
S-LOC 34**	1020/24	360 (400-½)	1020/30	360	(400-¾)
CIRCLING***	1200-1	1280-1	1340-1¾	1400-2¼	1900-3
	510 (600-1)	590 (600-1)	650 (700-1¾)	710 (800-2¼)	1210 (1300-3)

SAN ANTONIO, TEXAS
Amdt 2 13JUN24

29°23'N-98°35'W

KELLY FLD (KSKF)

ILS or LOC/DME Y RWY 34

SC-3, 31 OCT 2024 to 28 NOV 2024

SC-3, 31 OCT 2024 to 28 NOV 2024