

HI-TACAN Z RWY 16

TACAN KSY Chan 57	APCH CRS 151°	Rwy ldg 11,550 TDZE 690 Arprt Elev 690
-----------------------------	-------------------------	---

AL-371 [USAF]

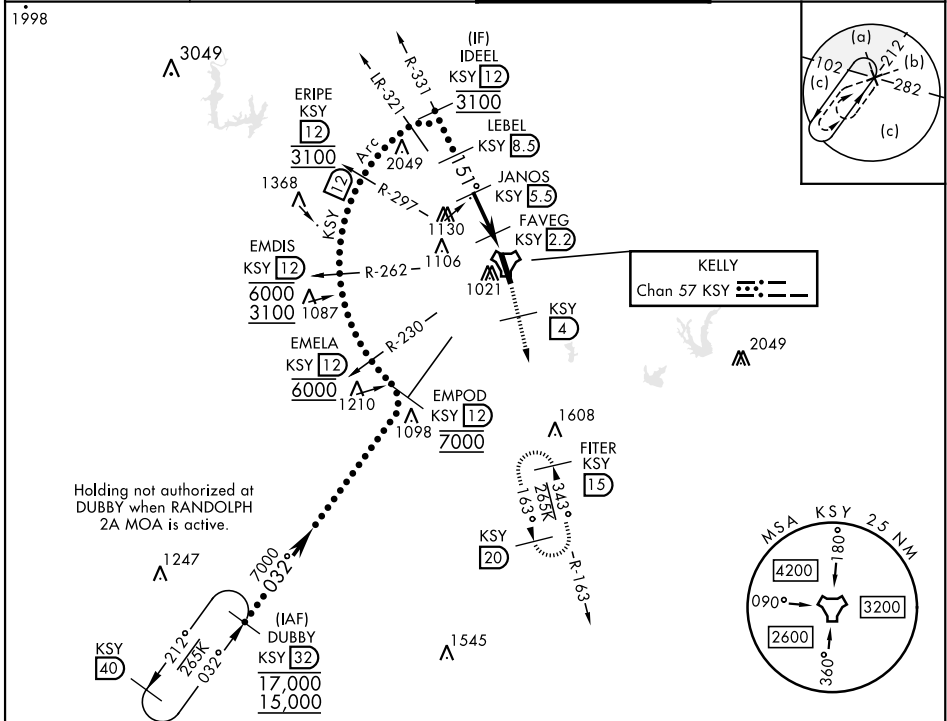
KELLY FLD (KSKF)

▼ * When ALS inop, increase RVR to 60 and vis to 1½ miles.
 ** Circling not authorized E of Rwy 16-34.

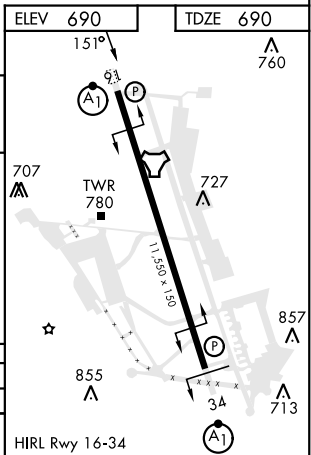


MISSED APPROACH: Climb to 2500 via KSY TACAN R-163 until 4 DME, then continue climb to 3000 to FITER/15 DME and hold.

ATIS 120.45 273.5	SAN ANTONIO APP CON 118.05 353.5	TOWER 124.3 322.35	GND CON 121.8 289.4
-----------------------------	--	------------------------------	-------------------------------



EMPOD R-212 12	EMELA R-230 12	EMDIS R-262 12	ERPE R-297 12	IDEEL R-331 12	LEBEL 8.5	JANOS 5.5	FAVEG 2.2	FAVLA 1.9	TACAN
7000	6000	6000	3100	3100	2600	2500	1360		
VGSI and descent angles not coincident (VGSI angle 3.01/TCH 89). 2500 KSY R-163 3000 FITER KSY 15									
CATEGORY	C		D		E				
S-16*	1100/40		410		[500-34]				
CIRCLING**	1340-134 650 (700-134)		1400-214 710 (800-214)		1900-3 1210 (1300-3)				



HI-TACAN Z RWY 16

SC-3, 31 OCT 2024 to 28 NOV 2024

SC-3, 31 OCT 2024 to 28 NOV 2024