

(YODUH1.YODUH) 24081

AL-369 (FAA)

SAN ANTONIO INTL (SAT)

# YODUH ONE DEPARTURE (RNAV)

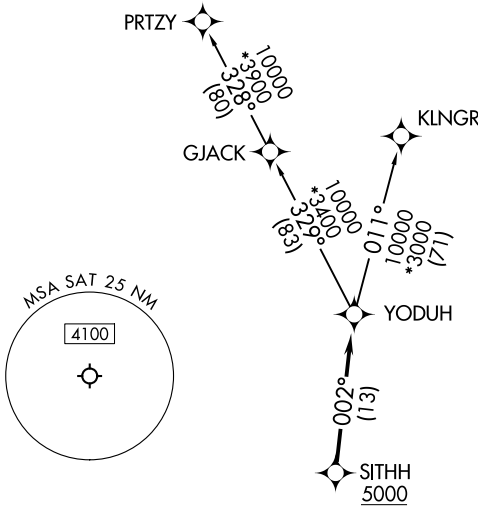
SAN ANTONIO, TEXAS

RNAV 1 - DME/DME IRU or GPS.

**TOP ALTITUDE:  
5000**

RADAR required.

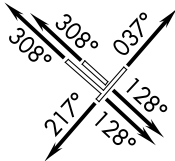
SAN ANTONIO DEP CON  
 125.1 307.0 (Rwy 31L/R)  
 125.7 290.225 (Rwy 22)  
 127.1 269.1 (Rwys 4, 13L/R)  
 D-ATIS  
 118.9  
 CLNC DEL  
 126.7  
 CPDLC  
 GND CON  
 121.9 348.6  
 SAN ANTONIO TOWER  
 119.8 257.8



### TAKEOFF MINIMUMS

Rwys 4, 13L/R, 22, 31L/R: Standard.

NOTE: Aircraft destined for airports north/northeast of DFW terminal area must file the KLNGR Transition.



NOTE: Chart not to scale.



### DEPARTURE ROUTE DESCRIPTION

TAKEOFF RUNWAY 4: Climb on heading 037° or as assigned by ATC, for vectors to SITHH, thence . . .

TAKEOFF RUNWAYS 13L/R: Climb on heading 128° or as assigned by ATC, for vectors to SITHH, thence . . .

TAKEOFF RUNWAY 22: Climb on heading 217° or as assigned by ATC, for vectors to SITHH, thence . . .

TAKEOFF RUNWAYS 31L/R: Climb on heading 308° or as assigned by ATC, for vectors to SITHH, thence . . .

. . . on track 002° to YODUH, then on Transition. Maintain 5000.

KLNGR TRANSITION (YODUH1.KLNGR)

PRTZY TRANSITION (YODUH1.PRTZY)

# YODUH ONE DEPARTURE (RNAV)

(YODUH1.YODUH) 25JAN24

SAN ANTONIO, TEXAS  
SAN ANTONIO INTL (SAT)

SC-3, 03 OCT 2024 to 31 OCT 2024

SC-3, 03 OCT 2024 to 31 OCT 2024