

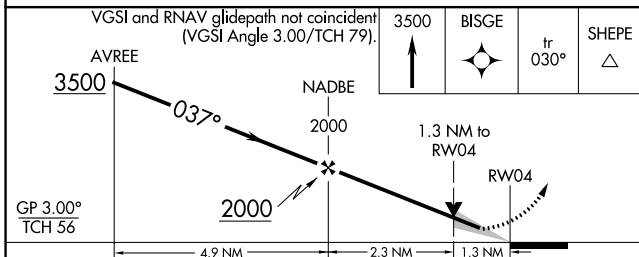
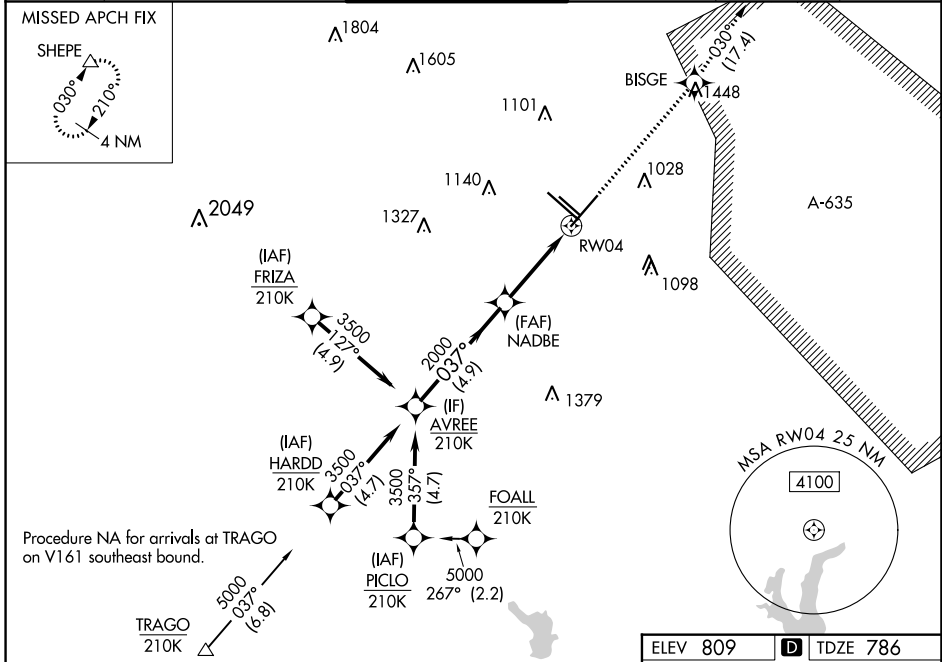
WAAS CH 77613 W04A	APP CRS 037°	Rwy Idg TDZE Apt Elev	8505 786 809
--	------------------------	-----------------------------	---

RNAV (GPS) Y RWY 4

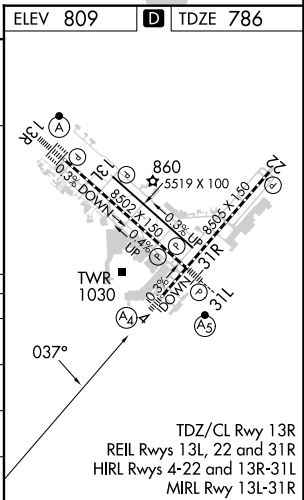
SAN ANTONIO INTL (SAT)

RNP APCH - GPS.		MALS	MISSED APPROACH: Climb to 3500 direct BISGE and track 030° to SHEPE and hold.
<p>⚠ Circling NA northwest of Rws 4 and 13R. Inop table does not apply to LPV. For uncompensated Baro-VNAV systems, procedure NA below -5°C or above 54°C.</p> <p>⚠ For inop ALS, increase LNAV/VNAV all Cats visibility to RVR 6000. Increase LNAV Cats A/B visibility to RVR 5500 and LNAV Cats C/D visibility to 1/2 SM.</p>			

D-ATIS 118.9	SAN ANTONIO APP CON 125.1 307.0	SAN ANTONIO TOWER 119.8 257.8	GND CON 121.9 348.6	CLNC DEL 126.7	CPDLC
------------------------	---	---	-------------------------------	--------------------------	-------



CATEGORY	A	B	C	D
LPV DA		986/40	200 (200-3/4)	
LNAV/VNAV DA		1201/50	415 (400-1)	
LNAV MDA	1280/40	494 (500-3/4)	1280/60	494 (500-1 1/4)
CIRCLING	1280-1 471 (500-1)	1340-1 531 (600-1)	1420-1 3/4 611 (700-1 3/4)	1520-2 1/4 711 (800-2 1/4)



SC-3, 03 OCT 2024 to 31 OCT 2024

SC-3, 03 OCT 2024 to 31 OCT 2024