

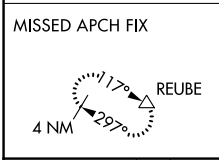
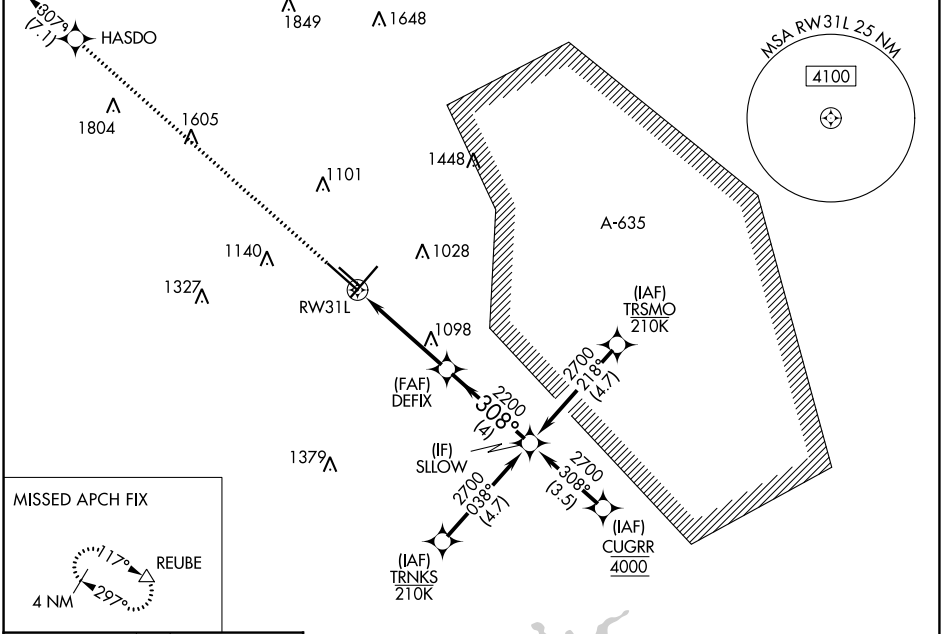
WAAS CH 61209 W31A	APP CRS 308°	Rwy Idg 8502 TDZE 790 Apt Elev 809
--	------------------------	---

RNAV (GPS) Y RWY 31L

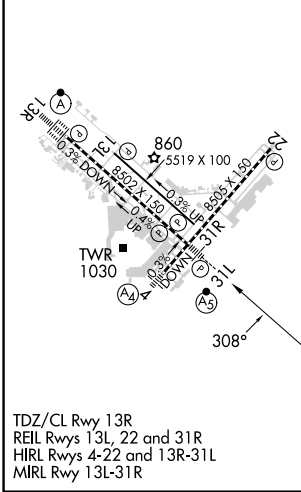
SAN ANTONIO INTL (SAT)

RNP APCH - GPS.	MALSR	MISSED APPROACH: Climb to 4200 direct HASDO and track 307° to REUBE and hold.
<p>▼ For uncompensated Baro-VNAV systems, LNAV/VNAV NA below -5°C or above 54°C. Circling NA northwest of Rws 4 and 13R.</p> <p>▲ * RVR 1800 authorized with use of FD or AP or HUD to DA.</p>		

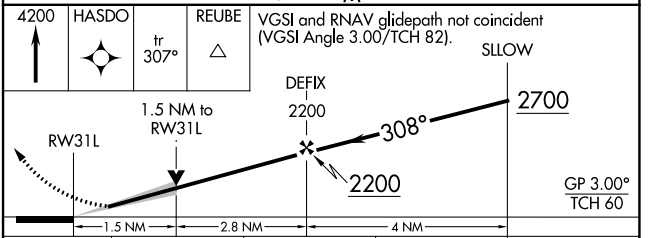
D-ATIS 118.9	SAN ANTONIO APP CON 125.1 307.0	SAN ANTONIO TOWER 119.8 257.8	GND CON 121.9 348.6	CLNC DEL 126.7	CPDLC
------------------------	---	---	-------------------------------	--------------------------	-------



ELEV 809	D	TDZE 790
----------	----------	----------



TDZ/CL Rwy 13R
REIL Rws 13L, 22 and 31R
HIRL Rws 4-22 and 13R-31L
MIRL Rwy 13L-31R



CATEGORY	A	B	C	D
LPV DA *		990/24	200 (200-½)	
LNAV/VNAV DA		1220/40	430 (500-¾)	
LNAV MDA	1360/24	570 (600-½)	1360/60	570 (600-1¼)
C CIRCLING	1360-1	551 (600-1)	1420-1¾ 611 (700-1¾)	1520-2¼ 711 (800-2¼)

SC-3, 03 OCT 2024 to 31 OCT 2024

SC-3, 03 OCT 2024 to 31 OCT 2024