

APP CRS	Rwy Idg	<b>8505</b>
<b>217°</b>	TDZE	<b>770</b>
	Apt Elev	<b>809</b>

# RNAV (RNP) Z RWY 22

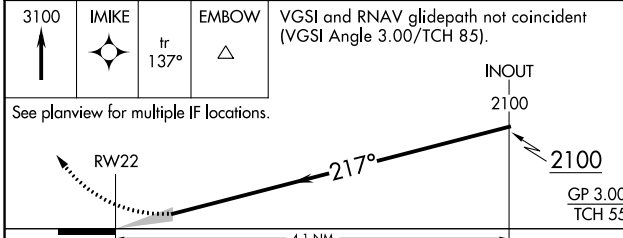
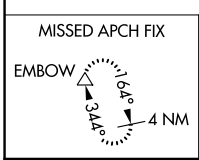
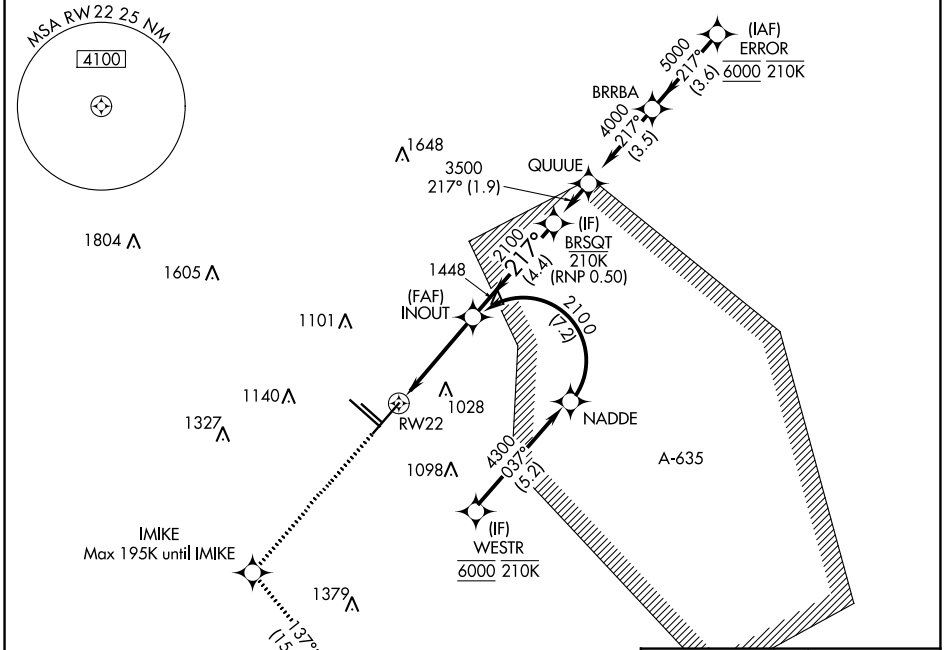
SAN ANTONIO INTL (SAT)

RNP AR APCH - GPS. Authorization required.  
 From BRSQT: Min RNP 0.50. From NADDE: RF.

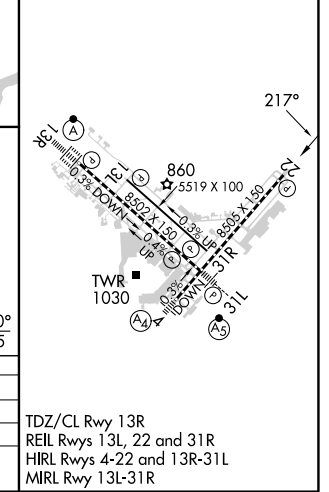
▼ For uncompensated Baro-VNAV systems, procedure NA below -5°C or above 54°C.

MISSED APPROACH: (Do not exceed 195K until IMIKE) Climb to 3100 direct IMIKE and on track 137° to EMBOW and hold.

D-ATIS	SAN ANTONIO APP CON	SAN ANTONIO TOWER	GND CON	CLNC DEL	CPDLC
<b>118.9</b>	<b>125.1 307.0</b>	<b>119.8 257.8</b>	<b>121.9 348.6</b>	<b>126.7</b>	



ELEV	809	D	TDZE	770
------	-----	---	------	-----



CATEGORY	A	B	C	D
RNP 0.15 DA		1068-7/8	298 (300-7/8)	
RNP 0.30 DA		1220-13/8	450 (500-13/8)	

**AUTHORIZATION REQUIRED**

TDZ/CL Rwy 13R  
 REIL Rwys 13L, 22 and 31R  
 HIRL Rwys 4-22 and 13R-31L  
 MIRL Rwy 13L-31R

SC-3, 31 OCT 2024 to 28 NOV 2024

SC-3, 31 OCT 2024 to 28 NOV 2024