

QERVO ONE ARRIVAL (RNAV) Transition Routes

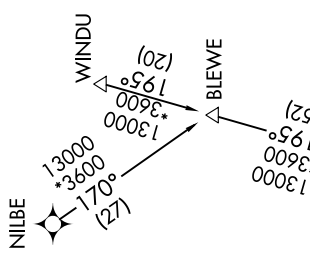
SAN ANTONIO, TEXAS

SC-3, 23 JAN 2025 to 20 FEB 2025

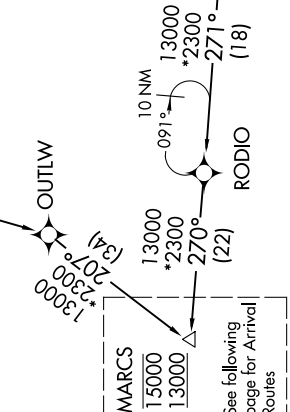
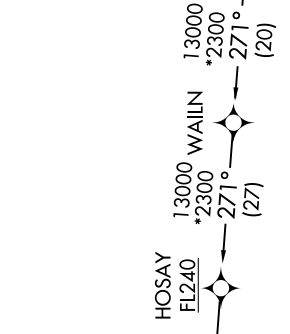
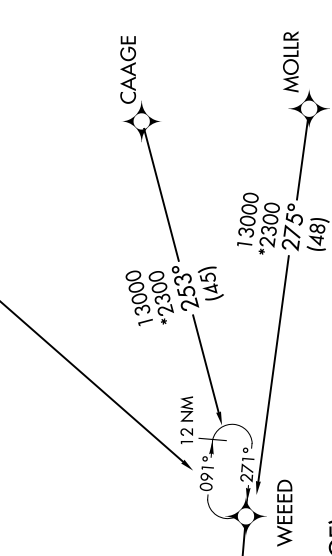
- BLEWE TRANSITION (BLEWE.QERVO1)
- CAAGE TRANSITION (CAAGE.QERVO1)
- LEAD TRANSITION (LEAD.QERVO1)
- MOLLR TRANSITION (MOLLR.QERVO1)
- NILBE TRANSITION (NILBE.QERVO1)
- WAILN TRANSITION (WAILN.QERVO1)
- WINDU TRANSITION (WINDU.QERVO1)

RNAV 1-DME/DME/IRU or GPS.
RADAR required.

SAN ANTONIO APP CON
127.1 269.1
BAZ ATIS
119.325
KRND ATIS*
290.525
KSKF ATIS
120.45 273.5
SAT D-ATIS
118.9
SSF ATIS
128.8



NOTE: Jet and turboprop aircraft only.
NOTE: WAILN Transition for Houston terminal Area Departures only.



See following page for Arrival Routes

(CONTINUED ON FOLLOWING PAGE)

NOTE: Chart not to scale.

SC-3, 23 JAN 2025 to 20 FEB 2025

QERVO ONE ARRIVAL (RNAV) Transition Routes

SAN ANTONIO, TEXAS