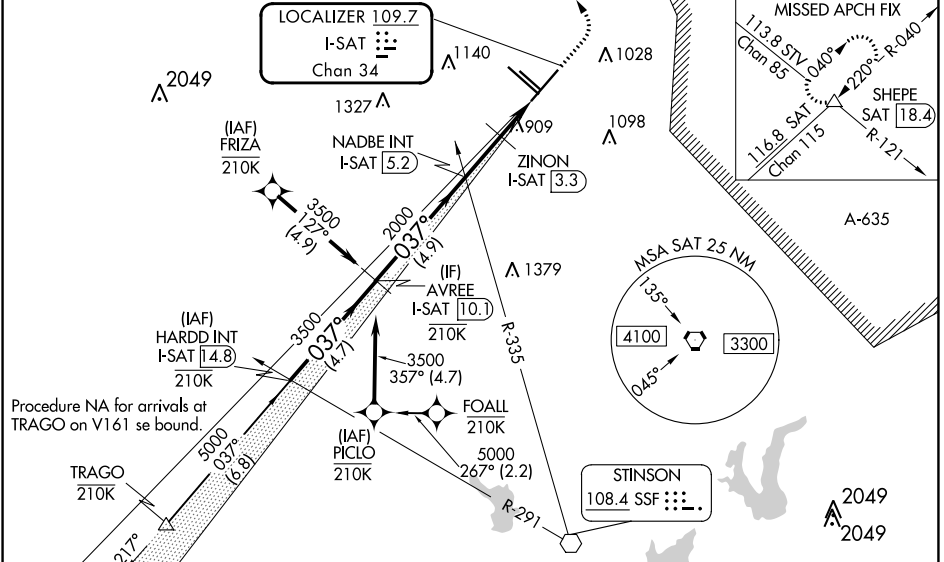


LOC/DME I-SAT <b>109.7</b> Chan <b>34</b>	APP CRS <b>037°</b>	Rwy ldg <b>8505</b> TDZE <b>786</b> Apt Elev <b>809</b>
---	------------------------	---

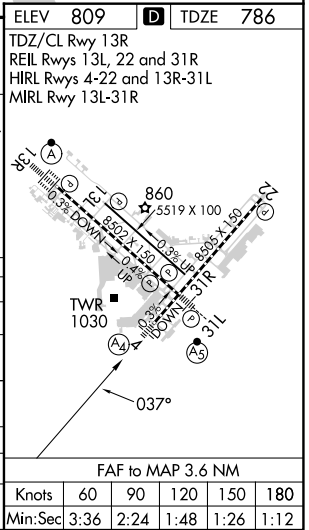
**ILS or LOC RWY 4**  
SAN ANTONIO INTL (SAT)

RNP APCH-GPS. From TRAGO or PICLO or FRIZA.		MALS A-M	MISSED APPROACH: Climb to 1700 then climbing left turn to 3500 on heading 025° and on SAT VORTAC R-040 to SHEPE INT/SAT 18.4 DME and hold.
Aircraft not GPS equipped - RADAR required for procedure entry.			
⚠ NA Circling NA northwest of Rws 4 and 13R. Autopilot coupled approach NA below 1189. Inop table does not apply to S-ILS 4. For inop ALS, increase S-LOC 4 Cat C/D visibility to RVR 6000.			

D-ATIS <b>118.9</b>	SAN ANTONIO APP CON <b>125.1 307.0</b>	SAN ANTONIO TOWER <b>119.8 257.8</b>	GND CON <b>121.9 348.6</b>	CLNC DEL <b>126.7</b>	CPDLC
------------------------	---	---	-------------------------------	--------------------------	-------



VGSIs and ILS glidepath not coincident (VGSIs Angle 3.00/TCH 79).		ELEV 809	TDZE 786
HARD INT I-SAT 14.8	AVREE I-SAT 10.1	3500	SAT R-040
5000	3500	2000	SHEPE
NADBE INT I-SAT 5.2		1200	See planview for multiple IF locations.
ZINON I-SAT 3.3		1200	
I-SAT 2.4		1200	
I-SAT 1.6		1200	
GS 3.00°	TCH 56	0.8 NM	
-4.7 NM		-4.9 NM	-1.9 NM
CATEGORY	A	B	C
S-ILS 4	986/40	200 (200-¾)	
S-LOC 4	1200/40	414 (400-¾)	1200/50 414 (400-1)
CIRCLING	1280-1 471 (500-1)	1340-1 531 (600-1)	1420-1¾ 611 (700-1¾) 1520-2¼ 711 (800-2¼)
ZINON FIX MINIMUMS (DME REQUIRED)			
S-LOC 4	1120/40	334 (400-¾)	
CIRCLING	1280-1 471 (500-1)	1340-1 531 (600-1)	1420-1¾ 611 (700-1¾) 1520-2¼ 711 (800-2¼)



SC-3, 31 OCT 2024 to 28 NOV 2024

SC-3, 31 OCT 2024 to 28 NOV 2024

FAF to MAP 3.6 NM					
Knots	60	90	120	150	180
Min:Sec	3:36	2:24	1:48	1:26	1:12