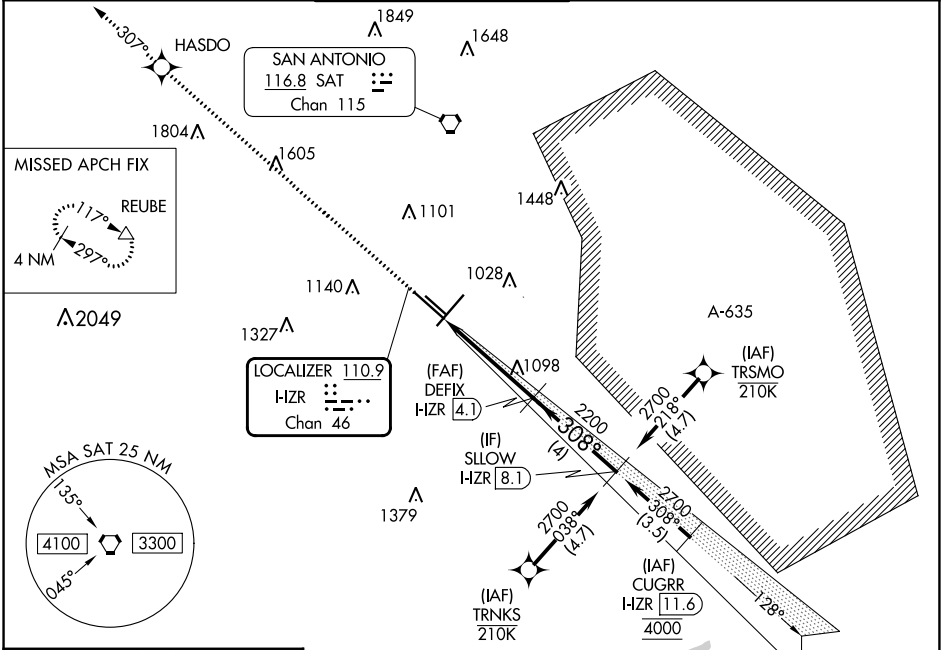


LOC/DME I-ZR <b>110.9</b> Chan 46	APP CRS <b>308°</b>	Rwy 31L Idg <b>8502</b> TDZE <b>790</b> Apt Elev <b>809</b>	Rwy 31R Idg <b>5519</b> TDZE <b>788</b> Apt Elev <b>809</b>
---	------------------------	---	---

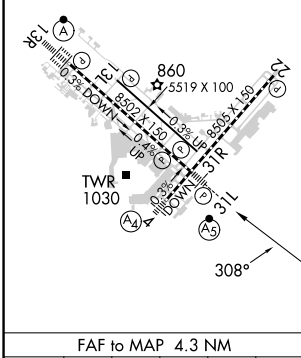
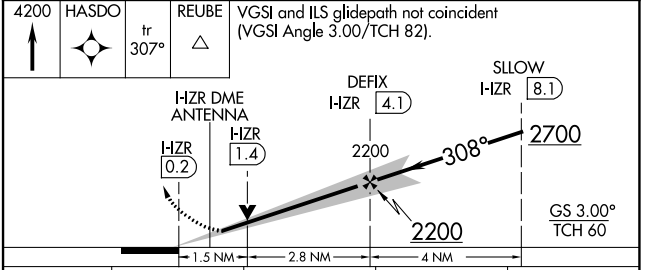
# ILS or LOC RWY 31L SAN ANTONIO INTL (SAT)

RNP APCH - GPS. Aircraft not GPS equipped - RADAR required for procedure entry. DME required.		MALSR	MISSED APPROACH: Climb to 4200 direct HASDO and track 307° to REUBE and hold.	
⚠ Circling NA northwest of Rwys 4 and 13R. ⚠ * RVR 1800 authorized with use of FD or AP or HUD to DA.				
D-ATIS <b>118.9</b>	SAN ANTONIO APP CON <b>125.1 307.0</b>	SAN ANTONIO TOWER <b>119.8 257.8</b>	GND CON <b>121.9 348.6</b>	CLNC DEL <b>126.7</b>
CPDLC				



ELEV 809	<b>D</b>	TDZE 790 31L 788 31R
----------	----------	-------------------------

TDZ/CL Rwy 13R  
REIL Rwys 13L, 22 and 31R  
HIRL Rwys 4-22 and 13R-31L  
MIRL Rwy 13L-31R



FAF to MAP 4.3 NM					
Knots	60	90	120	150	180
Min:Sec	4:18	2:52	2:09	1:43	1:26

CATEGORY	A	B	C	D
S-ILS 31L *	990/24 200 (200-½)			
S-LOC 31L	1360/24	570 (600-½)	1360/60	570 (600-¼)
SIDESTEP 31R	1360-1	572 (600-1)	1360-1½	1360-2
Ⓞ CIRCLING	1360-1	551 (600-1)	1420-1¾	1520-2¼
			611 (700-1¾)	711 (800-2¼)

SAN ANTONIO INTL (SAT)  
**ILS or LOC RWY 31L**

SC-3, 03 OCT 2024 to 31 OCT 2024

SC-3, 03 OCT 2024 to 31 OCT 2024