

CRVZA ONE ARRIVAL (RNAV) Transition Routes

SAN ANTONIO, TEXAS

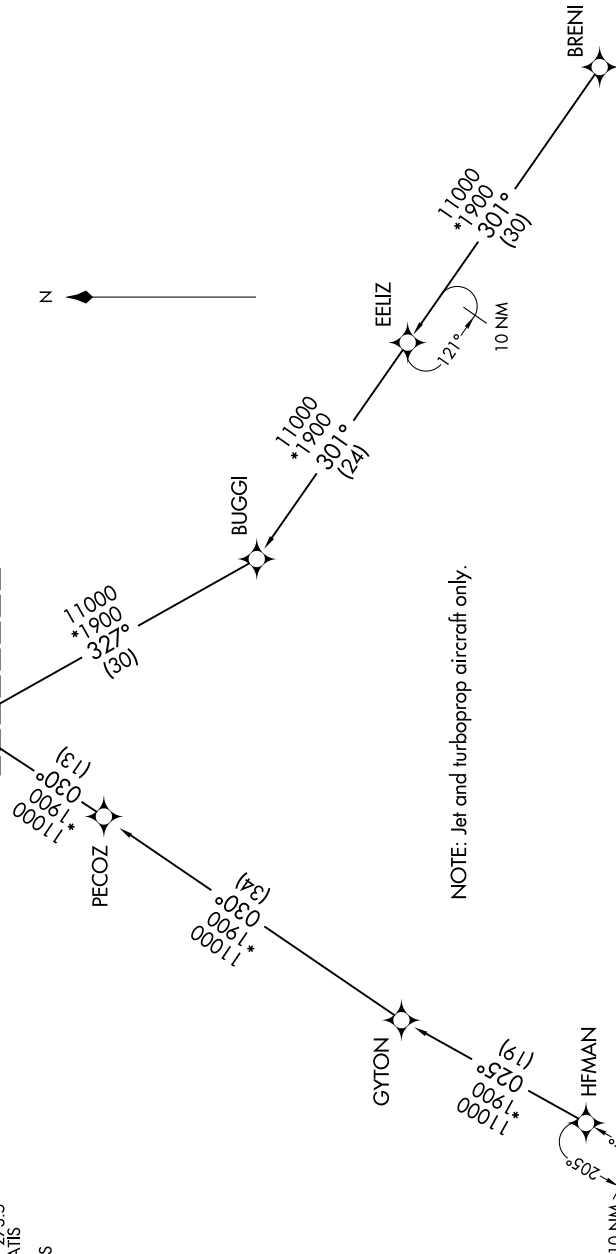
SC-3, 31 OCT 2024 to 28 NOV 2024

SAN ANTONIO APP CON
 543.7
 290.225
 B43.7 ATIS
 B47.6 ATIS
 B47.6 ATIS
 KRND ATIS ★
 280.525
 KSKF ATIS
 120.45 273.5
 SAT D-ATIS
 118.9
 SSF ATIS
 128.8

See following page for Arrival Routes

CRVZA
17000 250K
11000

RNAV 1 - DME/DME/IRU or GPS.
 RADAR required.



NOTE: Jet and turboprop aircraft only.

BRENI TRANSITION (BRENI.CRZVA1)
 EELIZ TRANSITION (EELIZ.CRZVA1)
 HFMAN TRANSITION (HFMAN.CRZVA1)

(CONTINUED ON FOLLOWING PAGE)

NOTE: Chart not to scale.

SC-3, 31 OCT 2024 to 28 NOV 2024

CRVZA ONE ARRIVAL (RNAV) Transition Routes

SAN ANTONIO, TEXAS