

# ALAMO FOUR DEPARTURE

**TOP ALTITUDE:  
5000**

RADAR required.

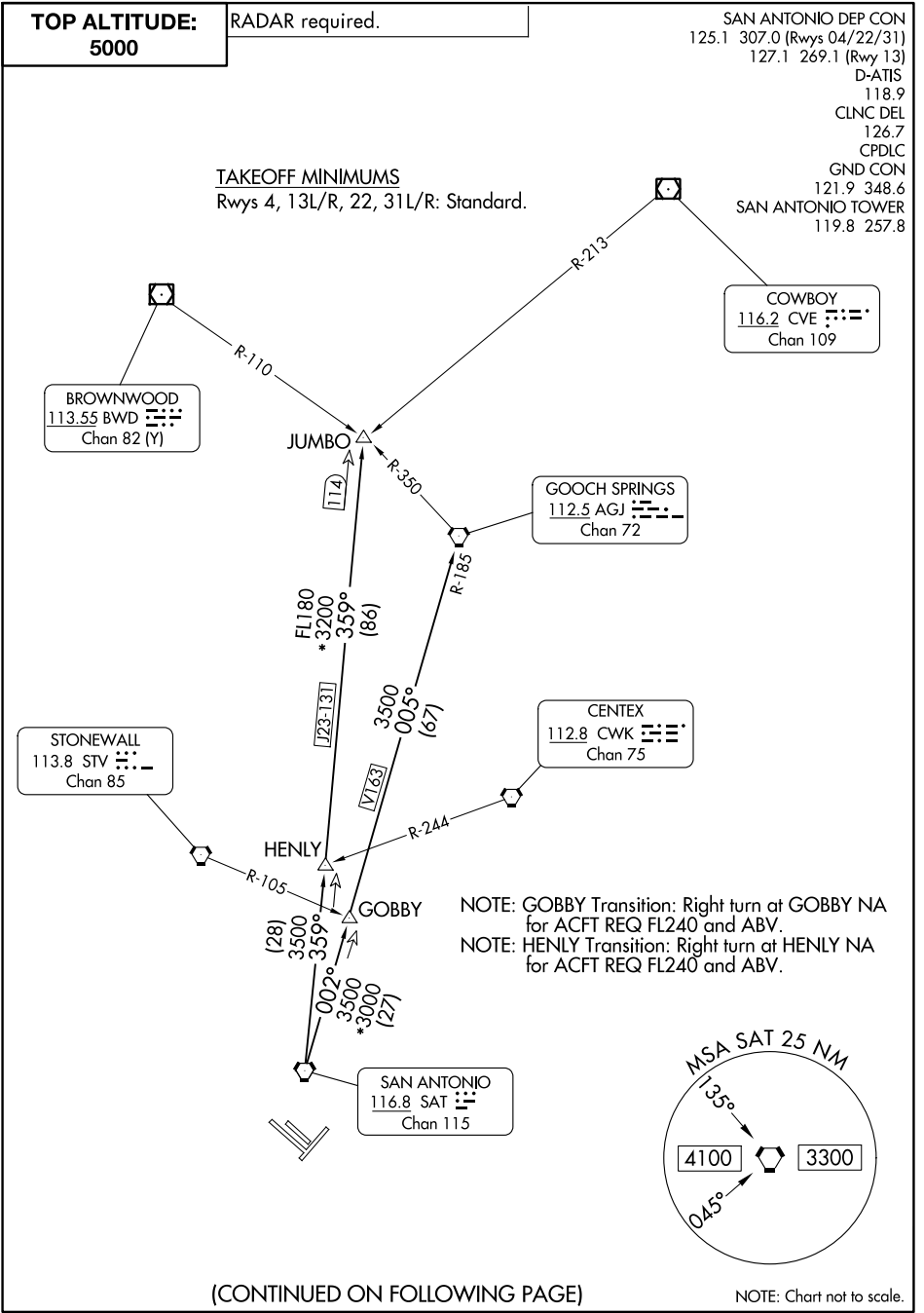
SAN ANTONIO DEP CON  
125.1 307.0 (Rwys 04/22/31)  
127.1 269.1 (Rwy 13)  
D-ATIS  
118.9  
CLNC DEL  
126.7  
CPDLC  
GND CON  
121.9 348.6  
SAN ANTONIO TOWER  
119.8 257.8

TAKEOFF MINIMUMS

Rwys 4, 13L/R, 22, 31L/R: Standard.

SC-3, 31 OCT 2024 to 28 NOV 2024

SC-3, 31 OCT 2024 to 28 NOV 2024



(CONTINUED ON FOLLOWING PAGE)

NOTE: Chart not to scale.

# ALAMO FOUR DEPARTURE