

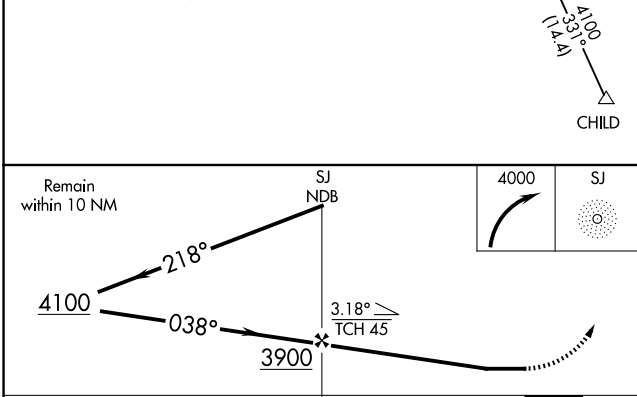
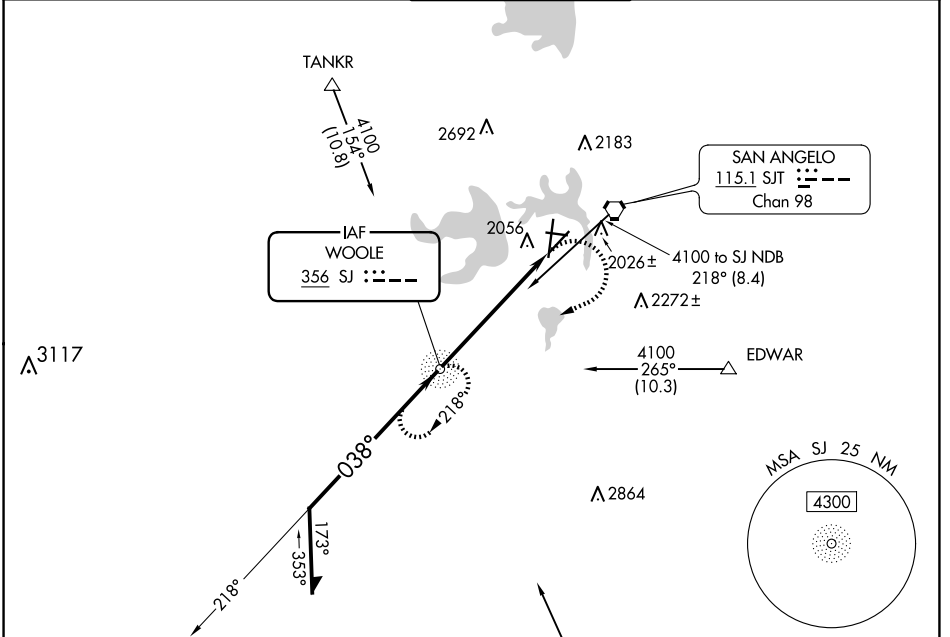
NDB SJ 356	APP CRS 038°	Rwy Idg TDZE Apt Elev	5940 1917 1919
----------------------	------------------------	-----------------------------	---

NDB RWY 3

SAN ANGELO RGNL/MATHIS FLD (SJT)

<p>For inop ALS, increase Cat A/B visibility to RVR 5500, and Cat C/D to 2 SM.</p>		MISSED APPROACH: Climbing right turn to 4000 direct SJ NDB and hold.		

ATIS 128.45 319.0	SAN ANGELO APP CON ★ 125.35 354.1	MATHIS TOWER ★ 118.3(CTAF) 284.7	GND CON 121.9 348.6	UNICOM 122.95
-----------------------------	---	--	-------------------------------	-------------------------



ELEV 1919	TDZE 1917
MIRL Rwy 9-27 and 18-36	
HIRL Rwy 3-21	
REIL Rwy 18	

Runway layout: 81 (0.3% UP), 36 (0.3% DOWN), 27 (0.4% UP). Dimensions: 4406 X 75, 8054 X 150, 5940 X 150. TWR 1990. FAF to MAP 5.7 NM.

038° 5.7 NM from FAF
Knots: 60, 90, 120, 150, 180
Min:Sec: 5:42, 3:48, 2:51, 2:17, 1:54

CATEGORY	A	B	C	D
S-3	2640/40	723 (800-¾)	2640-1½	723 (800-1%)
CIRCLING	2640-1	721 (800-1)	2640-2	2700-2½ 781 (800-2½)

SC-3, 23 JAN 2025 to 20 FEB 2025

SC-3, 23 JAN 2025 to 20 FEB 2025