

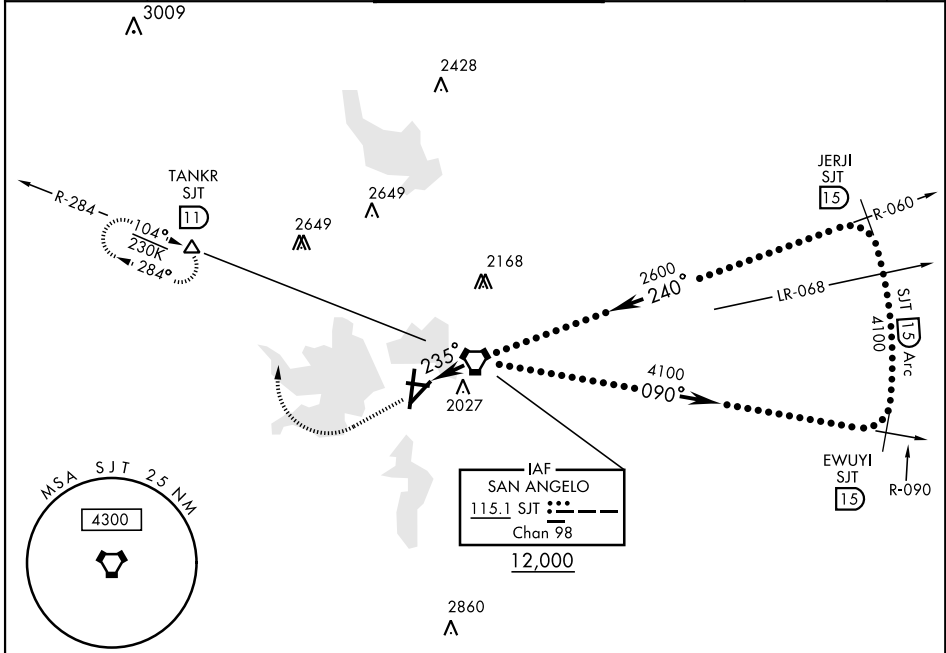
# HI-VOR Z or TACAN RWY 21

VORTAC SJT <b>115.1</b> Chan <b>98</b>	APCH CRS <b>235°</b>	Rwy Idg TDZE <b>1906</b> Arpt Elev <b>1919</b>	AL-367 [USAF]	SAN ANGELO RGNL MATHIS FLD (KSJT)
--	-------------------------	--	---------------	-----------------------------------

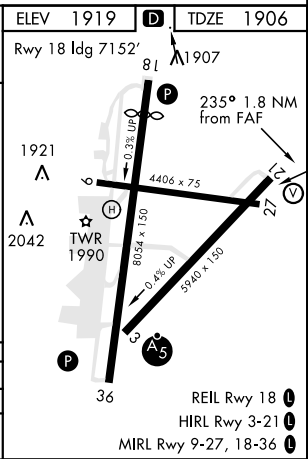
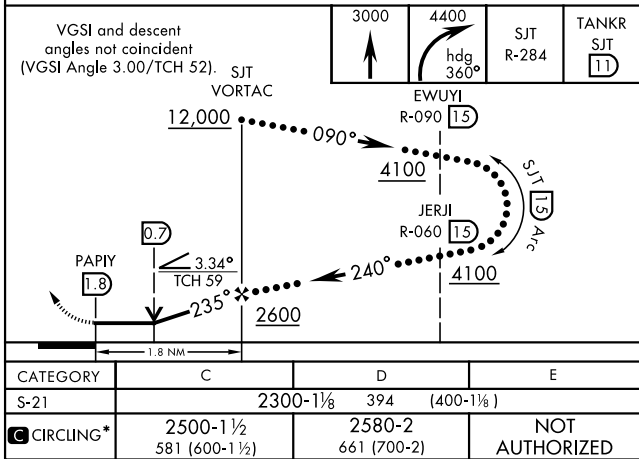
DME required.  
\* Circling NA for CAT D W of Rwy 18-36.

MISSED APPROACH: Climb to 3000 then climbing right turn to 4400 on heading 360° and SJT VORTAC R-284 to TANKR INT/11 DME and hold, continue climb-in-hold to 4400.

ATIS <b>128.45 319.0</b>	SAN ANGELO APP CON <b>125.35 354.1</b>	MATHIS TOWER ★ <b>118.3 0</b> (CTAF) <b>284.7</b>	GND CON <b>121.9 348.6</b>	UNICOM <b>122.95</b>	ASR
-----------------------------	---	--	-------------------------------	-------------------------	-----



EMERG SAFE ALT 100 NM 4700



# HI-VOR Z or TACAN RWY 21

SC-3, 31 OCT 2024 to 28 NOV 2024

SC-3, 31 OCT 2024 to 28 NOV 2024