

WAAS CH <b>49230</b> <b>W34A</b>	APP CRS <b>344°</b>	Rwy ldg TDZE Apt Elev	<b>12002</b> <b>4222</b> <b>4227</b>
----------------------------------------	------------------------	-----------------------------	--------------------------------------------

# RNAV (GPS) RWY 34R

SALT LAKE CITY INTL (SLC)

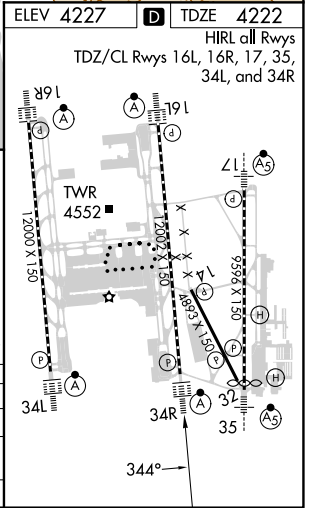
**NA** Simultaneous approach authorized. DME/DME RNP-0.3 NA. Use of FD or AP providing RNAV track guidance required during simultaneous operations. LNAV procedure NA during simultaneous operations. For uncompensated Baro-VNAV systems, LNAV/VNAV NA below -17°C (1°F) or above 49°C (121°F). For inop ALS, increase LPV Cat E visibility to ¾, LNAV/VNAV Cat E visibility to ¾ and LNAV Cate C/D/E to 1½ SM.

**ALSF-2** MISSED APPROACH: Climb to 9000 direct TCH VORTAC and on track 336° to OGD VORTAC and hold.

D-ATIS <b>124.75 125.625</b>	SALT LAKE CITY APP CON <b>125.7 284.6</b>	SALT LAKE CITY TOWER <b>119.05 257.8</b>	GND CON <b>123.775 348.6</b>	CLNC DEL <b>127.3 379.975</b>	CPDLC
---------------------------------	----------------------------------------------	---------------------------------------------	---------------------------------	----------------------------------	-------



ELEV 4227	TDZE 4222
HIRL all Rwy's TDZ/CL Rwy's 16L, 16R, 17, 35, 34L, and 34R	



9000 TCH	OGD tr 336°	VGSI and RNAV glidepath not coincident (VGSI Angle 3.00/TCH 73).				
*LNAV only.		IRUYU 1.5 NM to GITBE	CHEVL 6100	HAKKR 9000	ALGIE 10000	PLAGE 11000
*0.8 NM to GITBE		GITBE 4900	6100	9000	10000	GP 3.00° TCH 53
0.4 0.8 0.7 NM		-3.8 NM		-9.1 NM	-3.1 NM	-2.4 NM
CATEGORY	A	B	C	D	E	
LPV DA	4422/18		200 (200-½)			
LNAV/VNAV DA	4735/60		513 (600-1¼)			
LNAV MDA	4700/24	478 (500-½)	4700/50		478 (500-1)	

SW-4, 31 OCT 2024 to 28 NOV 2024

SW-4, 31 OCT 2024 to 28 NOV 2024