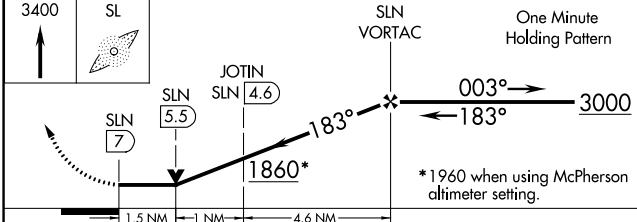
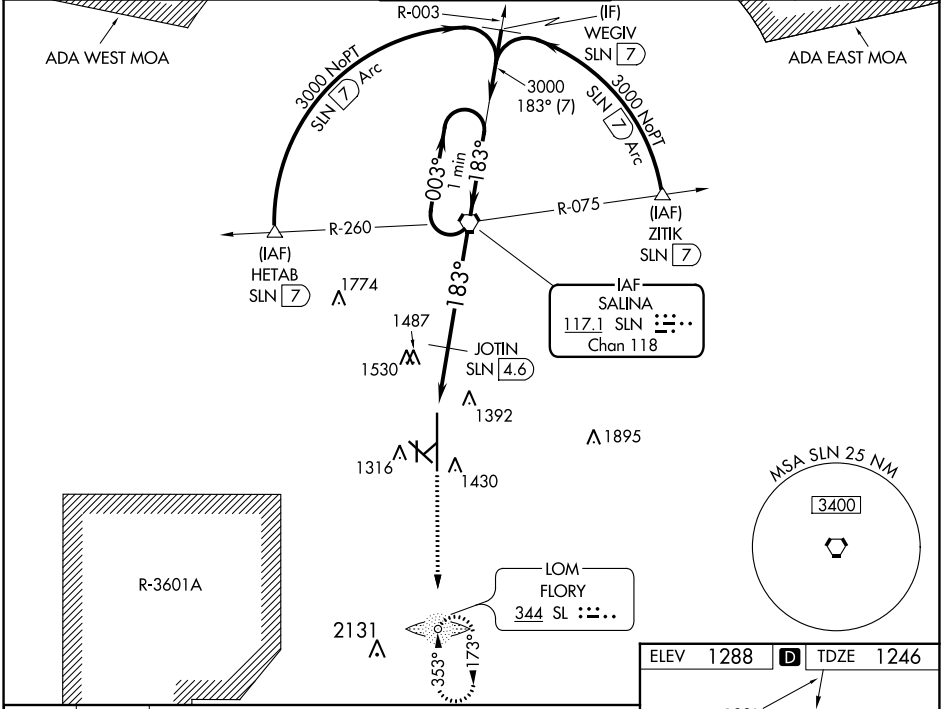


VORTAC SLN	APP CRS	Rwy Idg	<b>12300</b>
<b>117.1</b>	<b>183°</b>	TDZE	<b>1246</b>
Chan <b>118</b>		Apt Elev	<b>1288</b>

# VOR RWY 17

SALINA RGNL (SLN)

<p><b>▽</b> Inoperative table does not apply to Cat C/D/E.  <b>▲</b> Circling NA for Cat D/E southwest of Rwy 12-30.                  ADF required.</p>	<p>MALS</p>	<p>MISSED APPROACH: Climb to 3400 direct SL LOM and hold.</p>		
		<p>ATIS</p> <p><b>120.15</b></p>	<p>KANSAS CITY CENTER</p> <p><b>134.9 363.2</b></p>	<p>SALINA TOWER *</p> <p><b>119.3 (CTAF) 0 257.7</b></p>



ELEV	1288	<b>D</b>	TDZE	1246
------	------	----------	------	------

HIRL Rwy 17-30	<b>1</b>				
MIRL Rwy 12-30	<b>1</b>				
FAF to MAP 7 NM					
Knots	60	90	120	150	180
Min:Sec	7:00	4:40	3:30	2:48	2:20

CATEGORY	A	B	C	D	E
S-17	1860-¾ 614 (600-¾)		1860-1¾ 614 (600-1¾)	1860-2 614 (600-2)	1860-2½ 614 (600-2½)
CIRCLING	1860-1 572 (600-1)		1860-1¾ 572 (600-1¾)	1860-2 572 (600-2)	1920-2½ 632 (700-2½)
JOTIN FIX MINIMUMS					
S-17	1760-¾ 514 (500-¾)		1760-1½ 514 (500-1½)	1760-1¾ 514 (500-1¾)	
CIRCLING	1820-1 532 (600-1)	1840-1 552 (600-1)	1860-1½ 572 (600-1½)	1860-2 572 (600-2)	1920-2½ 632 (700-2½)

NC-2, 11 JUL 2024 to 08 AUG 2024

NC-2, 11 JUL 2024 to 08 AUG 2024