

ILS or LOC RWY 35

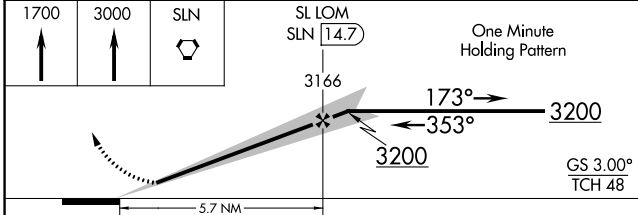
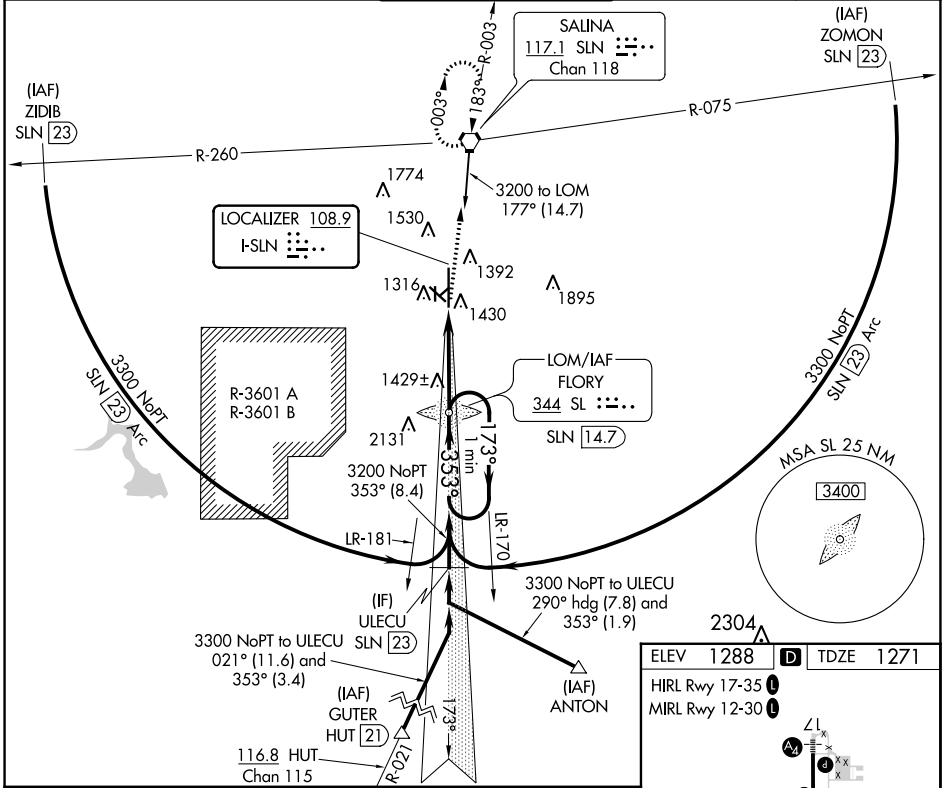
SALINA RGNL (SLN)

LOC I-SLN 108.9	APP CRS 353°	Rwy Idg 12300
		TDZE 1271
		Apt Elev 1288

▼ For inop ALS, increase S-LOC 35 Cat D visibility to 1 1/2 SM and Cat E visibility to 1 1/2 SM. For inop ALS, increase S-ILS 35 Cat E visibility to 3/4 SM. Circling NA for Cats D and E southwest of Rwy 12-30.

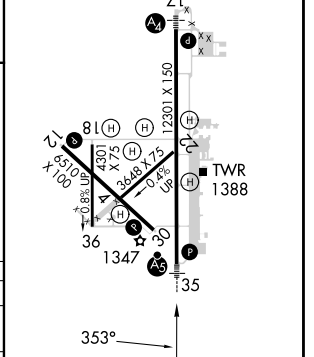
MALSRR
 MISSED APPROACH: Climb to 1700 then climb to 3000 direct SLN VORTAC and hold.

ATIS 120.15	KANSAS CITY CENTER 134.9 363.2	SALINA TOWER ★ 119.3 (CTAF) 0 257.7	GND CON 121.9 360.8	UNICOM 122.95
-----------------------	--	---	-------------------------------	-------------------------



ELEV 1288	TDZE 1271
-----------	-----------

HIRL Rwy 17-35
MIRL Rwy 12-30



CATEGORY	A	B	C	D	E
S-ILS 35		1471-1/2	200 (200-1/2)		
S-LOC 35		1680-1/2	409 (400-1/2)		
CIRCLING	1820-1 532 (600-1)	1840-1 552 (600-1)	1860-1 1/2 572 (600-1 1/2)	1860-2 572 (600-2)	1920-2 1/4 632 (700-2 1/4)

FAF to MAP 5.7 NM					
Knots	60	90	120	150	180
Min:Sec	5:42	3:48	2:51	2:17	1:54