


LOC/DME I-SLE	APP CRS	Rwy Idg	5811
110.3	313°	TDZE	213
Chan 40		Apt Elev	213

LOC Y RWY 31

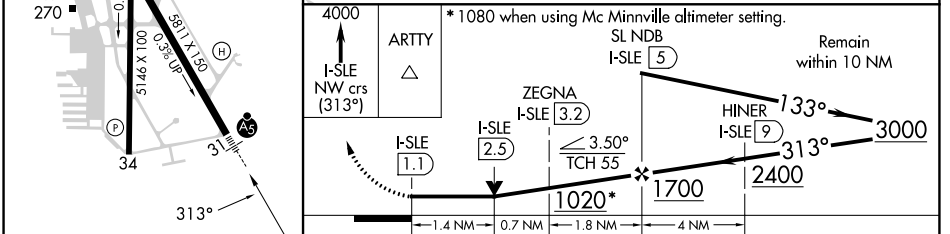
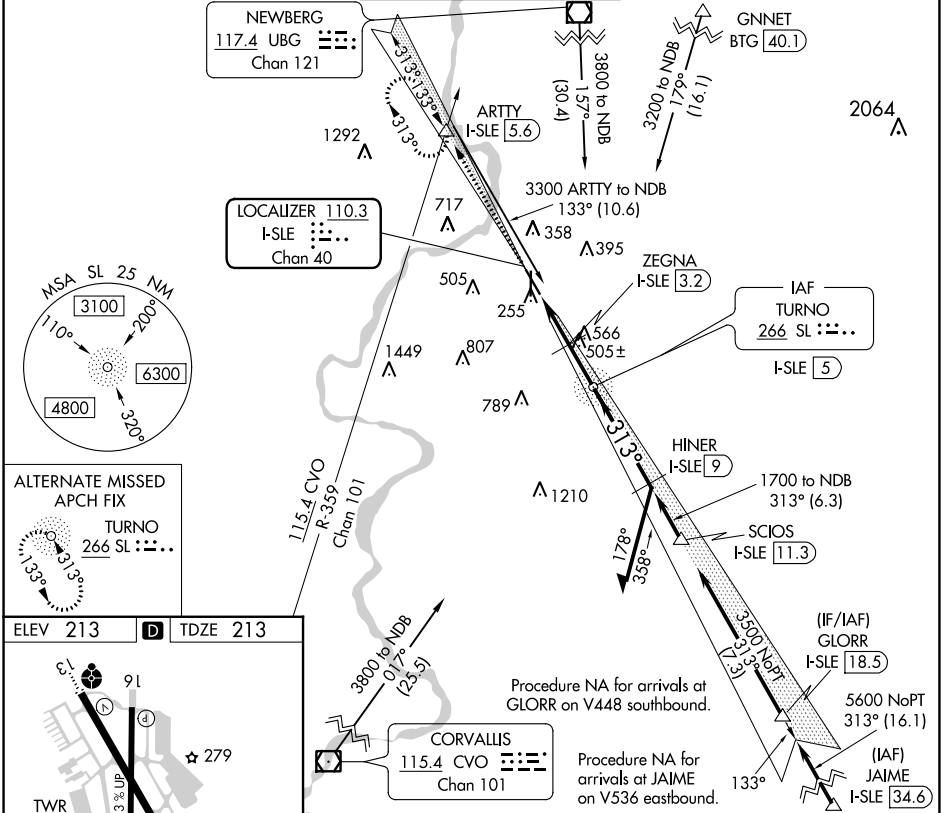
MCNARY FLD (SLE)

DME required. RADAR required.

⚠ When local altimeter setting not received, use Mc Minnville altimeter setting and increase all MDAs 60 feet and visibility S-LOC 31 Cat C/D 1/2 SM and Circling Cat C 1/2 SM. For inop ALS, increase S-LOC 31 Cats C and D visibility to 1 1/2 SM. For inop ALS when using Mc Minnville altimeter setting, increase S-LOC 31 Cats C and D visibility to 1 1/2 SM. VDP NA when using Mc Minnville altimeter setting.

MALSR  MISSED APPROACH: Climb to 4000 on I-SLE Localizer NW course (313°) to ARTTY INT/I-SLE 5.6 DME and hold, continue climb-in-hold to 4000.

ATIS	SEATTLE CENTER	SALEM TOWER ★	GND CON	UNICOM
124.55	125.8 291.7	119.1 (CTAF) 0 257.2	121.9	122.95



CATEGORY	A	B	C	D
S-LOC 31	780/24	567 (600-1/2)	780-1 1/4	567 (600-1 1/4)
CIRCLING	900-1	960-1	1060-2 1/2	1260-3
	687 (700-1)	747 (800-1)	847 (900-2 1/2)	1047 (1100-3)

NW-1, 26 JAN 2023 to 23 FEB 2023

NW-1, 26 JAN 2023 to 23 FEB 2023