

| | | |
|--|------------------------|---|
| WAAS CH 69499 W12A | APP CRS 123° | Rwy Idg 8956 TDZE 541 Apt Elev 618 |
|--|------------------------|---|

RNAV (GPS) Y RWY 12L

ST LOUIS LAMBERT INTL (STL)

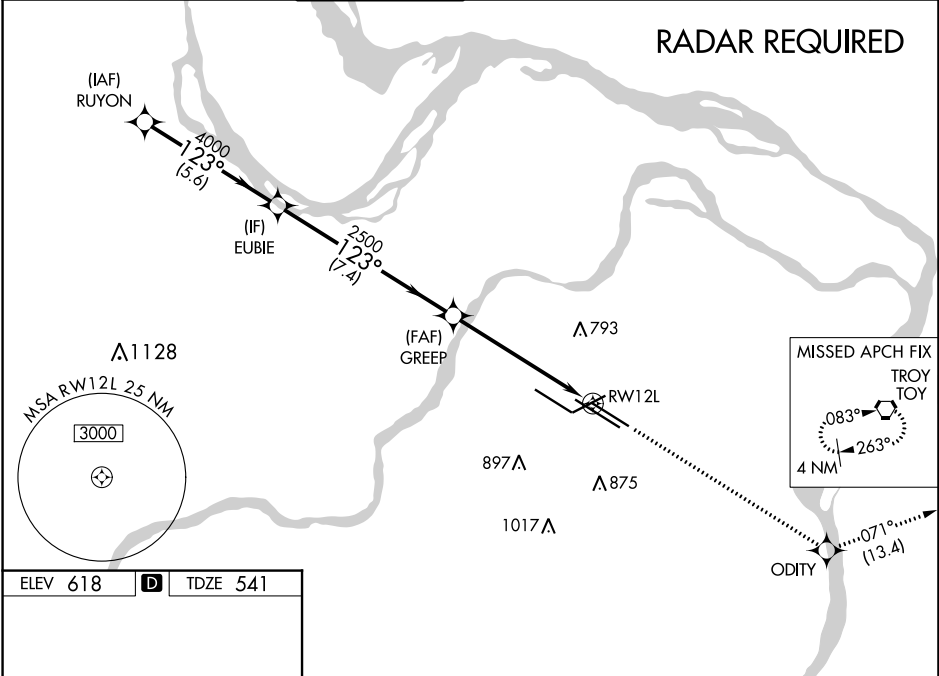
▼ For uncompensated Baro-VNAV systems, LNAV/VNAV NA below -16°C (4°F) or above 54°C (130°F). DME/DME RNP-0.3 NA. For inop ALS, increase LPV all Cats visibility to 1½ SM, LNAV/VNAV Cat E visibility to 1¾ SM, and LNAV Cat E visibility to 1¾ SM. Simultaneous approach authorized with Rwy 11. LNAV procedure NA during simultaneous operations. Use of FD or AP required during simultaneous operations.

ALSF-2

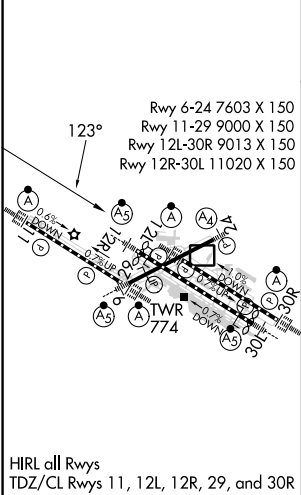


MISSED APPROACH: Climb to 3000 direct ODITY and on track 071° to TOY VORTAC and hold.

| | | | | | |
|--|---|--|---|--------------------------------|-------|
| D-ATIS 125.025 379.925 | ST. LOUIS APP CON 132.125 360.6 | ST. LOUIS TOWER 120.05 284.6 | GND CON 121.9 348.6 (Inbound) 121.65 377.175 (Outbound) 118.925 227.125 (Rwy 11/29) | CLNC DEL 119.5 363.1 | CPDLC |
|--|---|--|---|--------------------------------|-------|



| | | |
|----------|----------|----------|
| ELEV 618 | D | TDZE 541 |
|----------|----------|----------|



| | | | | | |
|--------------|----------------------|---------------------|---------------------|----------------------|---------|
| | RUYON | EUBIE | GREEP | ODITY | TOY |
| | 5000 | 4000 | 2500 | 3000 | tr 071° |
| | *1.4 NM to RWY 12L | | | | |
| | 5.6 NM | 7.4 NM | 4.5 NM | 1.4 NM | |
| CATEGORY | A | B | C | D | E |
| LPV DA | 951/50 410 (400-1) | | | | |
| LNAV/VNAV DA | 1040/60 499 (500-1½) | | | | |
| LNAV MDA | 1040/24 499 (500-½) | 1040/40 499 (500-¾) | 1040/50 499 (500-1) | 1040/60 499 (500-1¼) | |

NC-3, 13 JUN 2024 to 11 JUL 2024

NC-3, 13 JUN 2024 to 11 JUL 2024