

APP CRS	Rwy Idg	8956
123°	TDZE	541
	Apt Elev	618

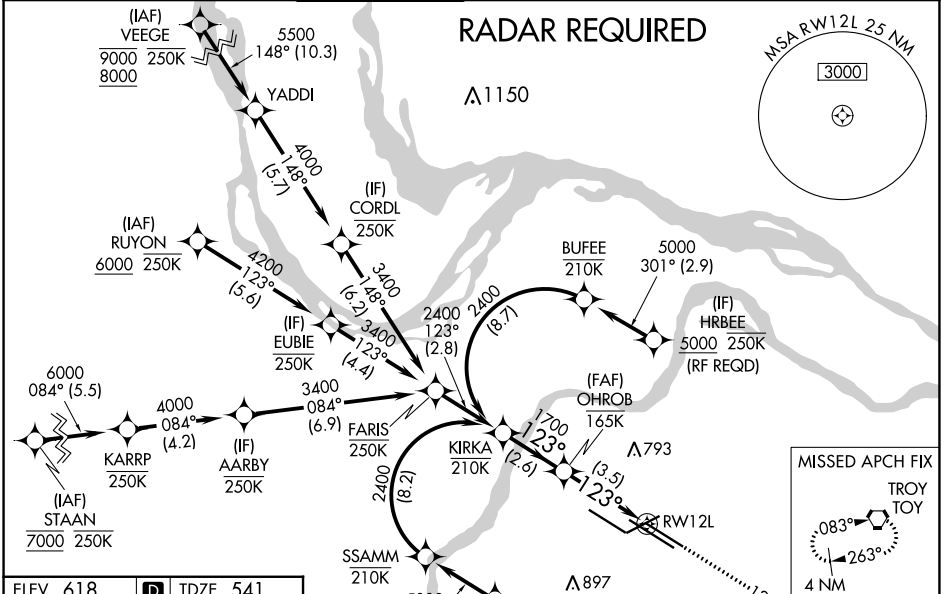
RNAV (RNP) Z RWY 12L

ST LOUIS LAMBERT INTL (STL)

▼ For uncompensated Baro-VNAV systems, procedure NA below -16°C (4°F) or above 54°C (130°F). GPS required. For inop ALS, increase RNP 0.30 all Cats visibility to 1 3/4 SM. Simultaneous approach authorized with Rwy 11, except for arrivals at RIPP and HRBEE. Use of FD or AP required during simultaneous operations.

ALSF-2
 MISSED APPROACH: Climb to 3000 on track 123° to ODITY and on track 071° to TOY VORTAC and hold.

D-ATIS 125.025 379.925	ST. LOUIS APP CON 132.125 360.6	ST. LOUIS TOWER 120.05 284.6	GND CON 121.9 348.6 (Inbound) 121.65 377.175 (Outbound) 118.925 227.125 (Rwy 11/29)	CLNC DEL 119.5 363.1	CPDLC
--	---	--	---	--------------------------------	-------

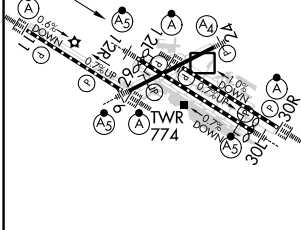


NC-3, 31 OCT 2024 to 28 NOV 2024

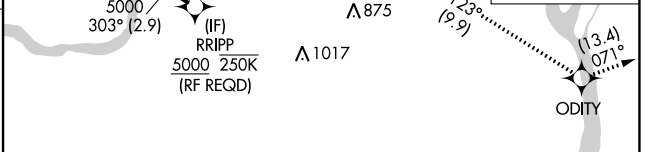
NC-3, 31 OCT 2024 to 28 NOV 2024

ELEV 618	D	TDZE 541
----------	----------	----------

Rwy 6-24 7603 X 150
 Rwy 11-29 9000 X 150
 Rwy 12L-30R 9013 X 150
 Rwy 12R-30L 11020 X 150



HIRL all Rwys
 TDZ/CL Rwys 11, 12L, 12R, 29, and 30R



KIRKA	OHROB	3000	ODITY	tr 071°	TOY
2400	1700	tr 123°			
See planview for multiple IF locations.					
GP 3.00°	2.6 NM		3.5 NM		
TCH 54					
CATEGORY	A	B	C	D	
RNP 0.30 DA	1043/60		502 (500-1 1/4)		

AUTHORIZATION REQUIRED