

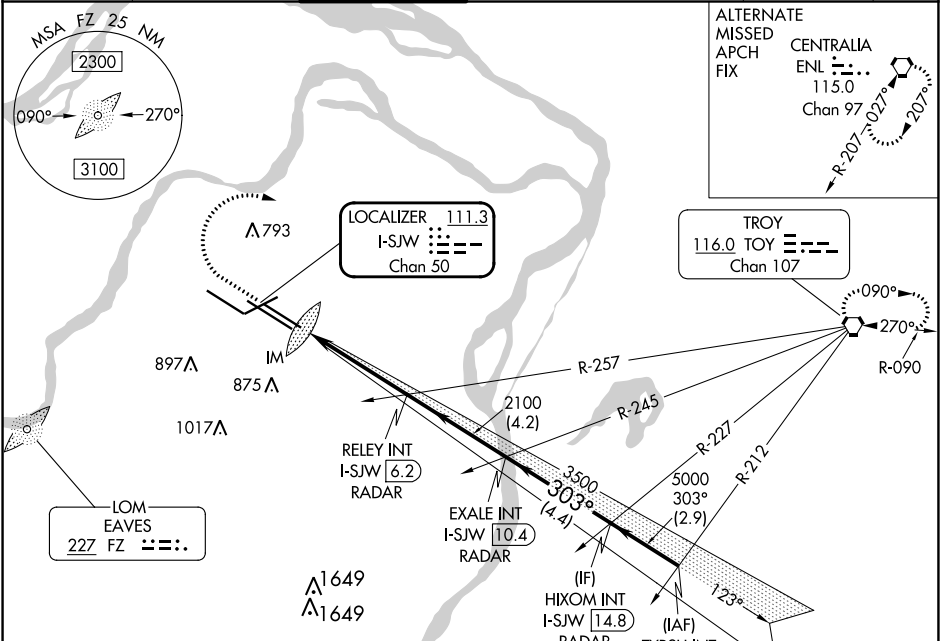
LOC/DME I-SJW <b>111.3</b> Chan <b>50</b>	APP CRS <b>303°</b>	Rwy Idg TDZE Apt Elev	<b>9013</b> <b>605</b> <b>618</b>
---	------------------------	-----------------------------	---

# ILS or LOC RWY 30R

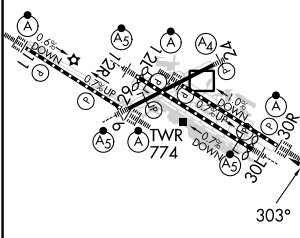
ST LOUIS LAMBERT INTL (STL)

RADAR required for procedure entry.		ALSF-2 	MISSED APPROACH: Climb to 1020 then climbing right turn to 3000 direct TOY VORTAC and hold.
<p>▼ For inop ALS, increase S-ILS 30R Cat E visibility to RVR 4000 and S-LOC 30R Cat C/D/E visibility to 1<math>\frac{3}{8}</math> SM. Simultaneous approach authorized with Rwy 29. Simultaneous approach authorized with Rwy 30L requires use of vertical guidance; maintain last assigned altitude until established on glideslope.</p>			

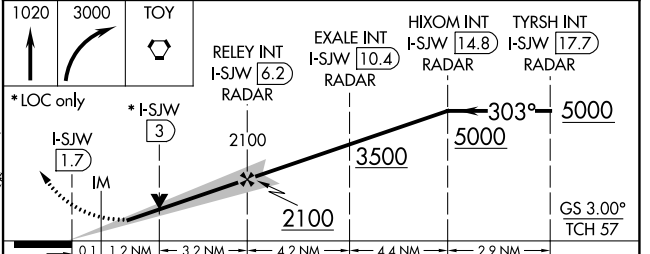
D-ATIS <b>125.025</b> <b>379.925</b>	ST. LOUIS APP CON <b>132.125 360.6</b>	ST. LOUIS TOWER <b>120.05 284.6</b>	GND CON <b>121.9 348.6</b> (Inbound) <b>121.65 377.175</b> (Outbound) <b>118.925 227.125</b> (Rwy 11/29)	CLNC DEL <b>119.5 363.1</b>	CPDLC
--	---	--	---	--------------------------------	-------



ELEV 618	<b>D</b> TDZE 605
Rwy 6-24 7603 X 150	
Rwy 11-29 9000 X 150	
Rwy 12L-30R 9013 X 150	
Rwy 12R-30L 11020 X 150	



HIRL all Rwy					
TDZ/CL Rwy 11, 12L, 12R, 29, and 30R					
FAF to MAP 4.5 NM					
Knots	60	90	120	150	180
Min:Sec	4:30	3:00	2:15	1:48	1:30



1020	3000	TOY	RELEY INT I-SJW [6.2] RADAR	EXALE INT I-SJW [10.4] RADAR	HIXOM INT I-SJW [14.8] RADAR	TYRSH INT I-SJW [17.7] RADAR
*LOC only						
I-SJW [1.7]	*I-SJW [3]	2100	3500	5000	303°	5000
GS 3.00° TCH 57						
0.1 1.2 NM 3.2 NM 4.2 NM 4.4 NM 2.9 NM						
CATEGORY	A		B		C	
S-ILS 30R	805/18		200 (200- $\frac{1}{2}$ )			
S-LOC 30R	1080/24		475 (500- $\frac{1}{2}$ )		1080/50 475 (500-1)	

NC-3, 31 OCT 2024 to 28 NOV 2024

NC-3, 31 OCT 2024 to 28 NOV 2024