

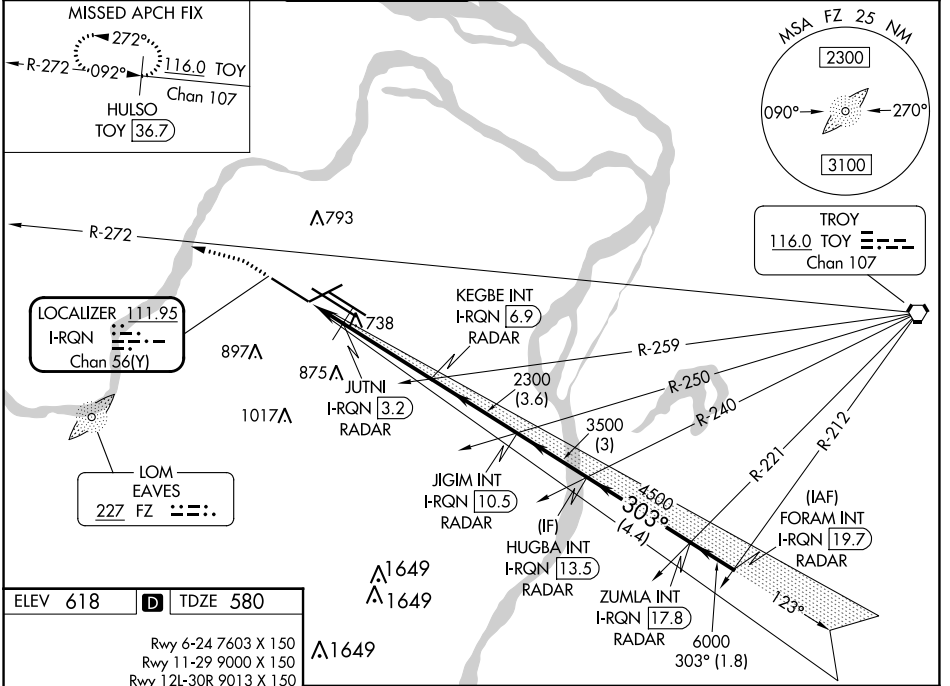
LOC/DME I-RQN 111.95 Chan 56(Y)	APP CRS 303°	Rwy ldg TDZE Apt Elev 9000 580 618
---	------------------------	--

ILS or LOC RWY 29

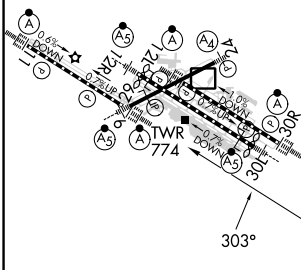
ST LOUIS LAMBERT INTL (STL)

RADAR required for procedure entry. DME or RADAR required.		ALSF-2 	MISSED APPROACH: Climb to 1040 then climbing left turn to 3000 on heading 286° and on TOY VORTAC R-272 to HULSO/TOY 36.7 DME and hold.
<p>⚠ Simultaneous approach authorized with Rwy 30R/L. Autopilot coupled approach NA. Rwy 29 helicopter visibility reduction below RVR 4000 NA. For inop ALS, increase S-ILS Cat E visibility to RVR 4000, increase S-LOC Cats A/B visibility to RVR 5500, and Cat C/D/E to RVR 6000.</p>			

D-ATIS 125.025 379.925	ST. LOUIS APP CON 132.125 360.6	ST. LOUIS TOWER 132.475 239.275	GND CON 121.9 348.6 (Inbound) 121.65 377.175 (Outbound) 118.925 227.125 (Rwy 11/29)	CLNC DEL 119.5 363.1	CPDLC
--	---	---	---	--------------------------------	-------



ELEV 618	D	TDZE 580
Rwy 6-24 7603 X 150 Rwy 11-29 9000 X 150 Rwy 12L-30R 9013 X 150 Rwy 12R-30L 11020 X 150		



1040	3000	TOY R-272	HULSO TOY 36.7	VGSI and ILS glidepath not coincident (VGSI Angle 3.00/ TCH 73).				
↑ hdg 286°				HUGBA INT I-RQN 13.5 RADAR	ZUMLA INT I-RQN 17.8 RADAR	FORAM INT I-RQN 19.7 RADAR		
Disregard OM indications. * LOC only								
↑		JUTNI I-RQN 3.2 RADAR	KEGBE INT I-RQN 6.9 RADAR	JIGIM INT I-RQN 10.5 RADAR				
↑		I-RQN 1.7	2300	3500	4500	6000	303°-6000	
↑		1100*	2300	3500	4500	6000	GS 3.00° TCH 56	
↑		1.5 NM	3.7 NM	3.6 NM	3 NM	4.4 NM	1.8 NM	
↑		CATEGORY A	B	C	D	E		
↑		S-ILS 29	780/18		200 (200-½)			
↑		S-LOC 29	980/40		400 (400-¾)			

HIRL all Rwy's TDZ/CL Rwy's 11, 12L, 12R, 29, and 30R FAF to MAP 5.2 NM					
Knots	60	90	120	150	180
Min:Sec	5:12	3:28	2:36	2:05	1:44

NC-3, 31 OCT 2024 to 28 NOV 2024

NC-3, 31 OCT 2024 to 28 NOV 2024