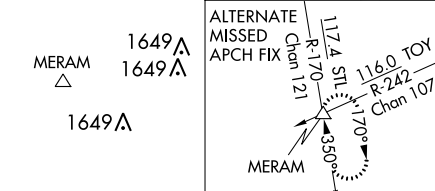
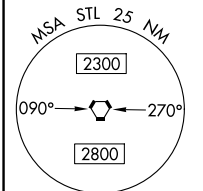
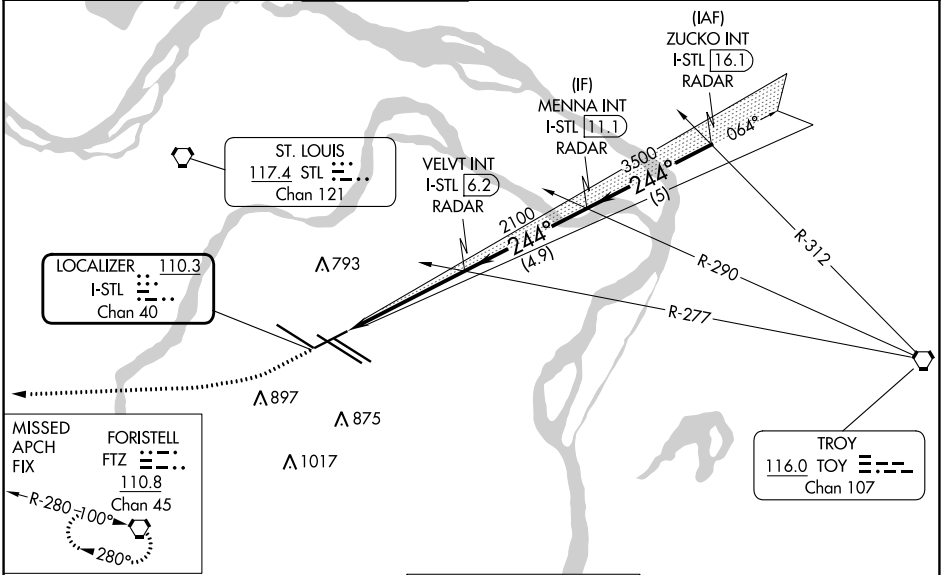


LOC/DME I-STL 110.3 Chan 40	APP CRS 244°	Rwy Idg TDZE 7603 534 Apt Elev 618
--	------------------------	---

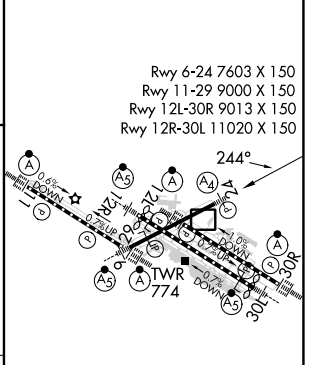
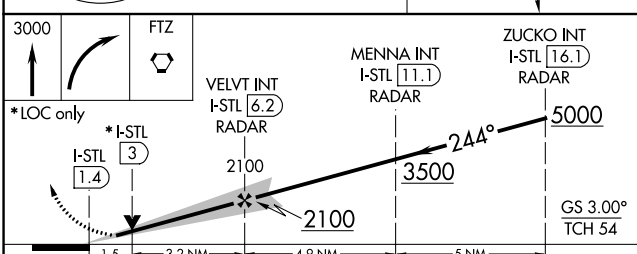
ILS or LOC RWY 24

ST LOUIS LAMBERT INTL (STL)

RADAR required for procedure entry.		MALS 	MISSED APPROACH: Climb to 3000 then right turn direct FTZ VORTAC and hold.	
<p>▼ Inop table does not apply to S-ILS 24. For inop ALS, increase S-LOC 24 Cat E visibility to 1½ SM.</p>		<p>GND CON 121.9 348.6 (Inbound) 121.65 377.175 (Outbound) 118.925 227.125 (Rwy 11/29)</p>		<p>CLNC DEL 119.5 363.1</p>
D-ATIS 125.025 379.925	ST. LOUIS APP CON 132.125 360.6	ST. LOUIS TOWER 120.05 284.6	CPDLC	



ELEV 618	D TDZE 534
----------	-------------------



CATEGORY	A	B	C	D	E
S-ILS 24	734/40 200 (200-¾)				
S-LOC 24	1080/40	546 (500-¾)	1080-1⅜	546 (500-1⅜)	

HIRL all Rwys					
TDZ/CL Rwys 11, 12L, 12R, 29, and 30R					
FAF to MAP 4.8 NM					
Knots	60	90	120	150	180
Min:Sec	4:48	3:12	2:24	1:55	1:36

NC-3, 13 JUN 2024 to 11 JUL 2024

NC-3, 13 JUN 2024 to 11 JUL 2024