

(CHUUC6.CHUUC) 22139

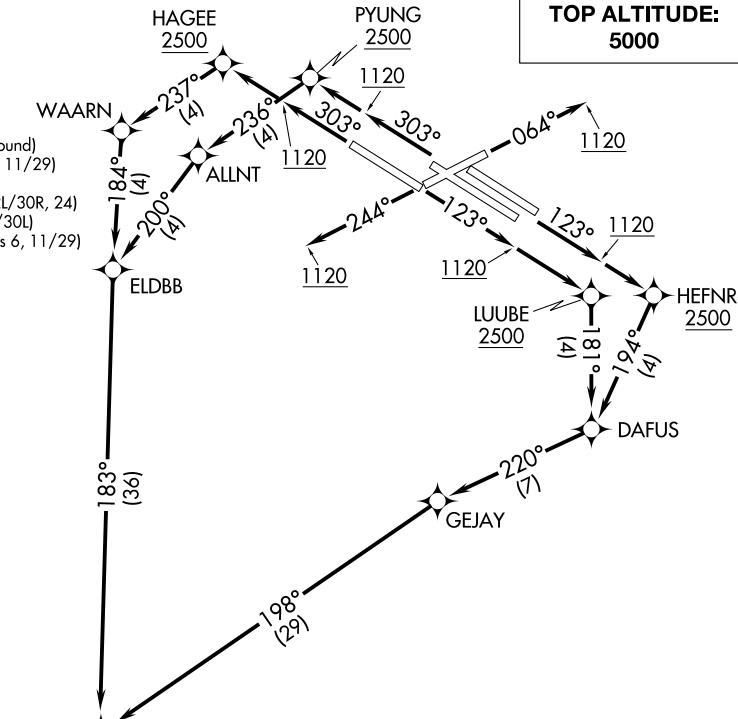
CHUUC SIX DEPARTURE (RNAV)

AL-360 (FAA)

ST LOUIS LAMBERT INTL (STL)
ST. LOUIS, MISSOURI

D-ATIS
125.025 379.925
CLNC DEL
119.5 363.1
CPDLC
GND CON
121.9 348.6 (Inbound)
121.65 377.175 (Outbound)
118.925 227.125 (Rwy 11/29)
ST. LOUIS TOWER
120.05 284.6 (Rwys 12L/30R, 24)
118.5 257.7 (Rwy 12R/30L)
132.475 239.275 (Rwys 6, 11/29)
ST. LOUIS DEP CON
128.1 307.05

**TOP ALTITUDE:
5000**



NOTE: RNAV 1.
NOTE: DME/DME/IRU or GPS required.
NOTE: RADAR required.
NOTE: For use by turbojet aircraft only.

TAKEOFF MINIMUMS

- Rwy 6: Standard with minimum climb of 500' per NM to 1120 then minimum climb of 240' per NM to 5000.
- Rwy 24: Standard with minimum climb of 500' per NM to 1120 then minimum climb of 260' per NM to 5000.
- Rwy 11: Standard with minimum climb of 500' per NM to LUUBE.
- Rwys 12L/R: Standard with minimum climb of 500' per NM to HEFNR.
- Rwy 29: Standard with minimum climb of 500' per NM to HAGEE.
- Rwys 30L/R: Standard with minimum climb of 500' per NM to PYUNG.

(NARRATIVE ON FOLLOWING PAGE)

NOTE: Chart not to scale.

CHUUC SIX DEPARTURE (RNAV)

(CHUUC6.CHUUC) 19MAY22

ST. LOUIS, MISSOURI
ST LOUIS LAMBERT INTL (STL)

NC-3, 13 JUN 2024 to 11 JUL 2024

NC-3, 13 JUN 2024 to 11 JUL 2024