

BGOOD FIVE DEPARTURE (RNAV)

AL-360 (FAA)

ST LOUIS LAMBERT INTL (STL)
ST. LOUIS, MISSOURI

NC-3, 11 JUL 2024 to 08 AUG 2024

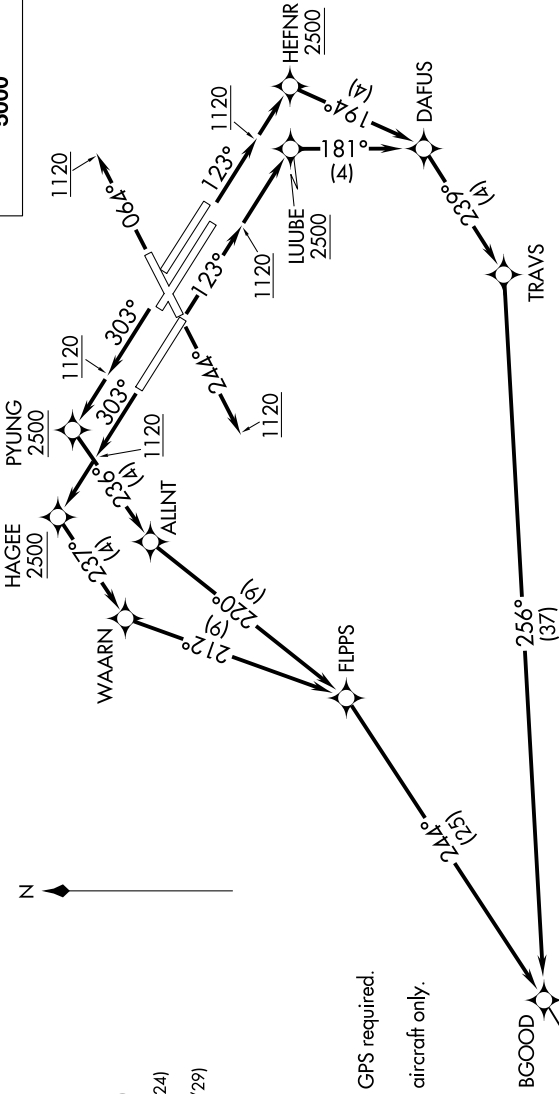
D-ATIS

125.025 379.925
CINC DEL
119.5 363.1
CPDIC
GND CON

121.9 348.6 (Inbound)
121.65 377.175 (Outbound)
118.925 227.125 (Rwy 11/29)
ST. LOUIS TOWER
120.05 284.6 (Rwys 12L/30R, 24)
118.5 257.7 (Rwy 12R/30L)
132.475 239.275 (Rwys 6, 11/29)
ST. LOUIS DEP CON
128.1 307.05



**TOP ALTITUDE:
5000**



NOTE: RNAV 1.
 NOTE: DME/DME/IRU or GPS required.
 NOTE: RADAR required.
 NOTE: For use by turbojet aircraft only.

TAKEOFF MINIMUMS

Rwy 6: Standard with minimum climb of 500' per NM to 1120 then minimum climb of 260' per NM to 5000.
 Rwy 24: Standard with minimum climb of 500' per NM to 1120 then minimum climb of 280' per NM to 5000.
 Rwy 11: Standard with minimum climb of 500' per NM to LUUBE.
 Rwys 12L/R: Standard with minimum climb of 500' per NM to HEFNR.
 Rwy 29: Standard with minimum climb of 500' per NM to HAGEE.
 Rwys 30L/R: Standard with minimum climb of 500' per NM to PYUNG.

NOTE: Chart not to scale.

(NARRATIVE ON FOLLOWING PAGE)

NC-3, 11 JUL 2024 to 08 AUG 2024

BGOOD FIVE DEPARTURE (RNAV)