

| | | | |
|--|------------------------|-----------------------------|---|
| WAAS CH 57935 W13A | APP CRS 132° | Rwy Idg TDZE Apt Elev | 4797 811 827 |
|--|------------------------|-----------------------------|---|

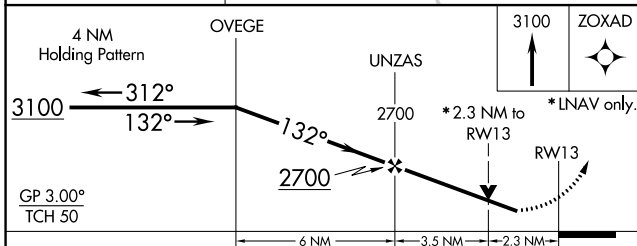
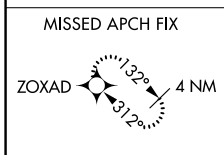
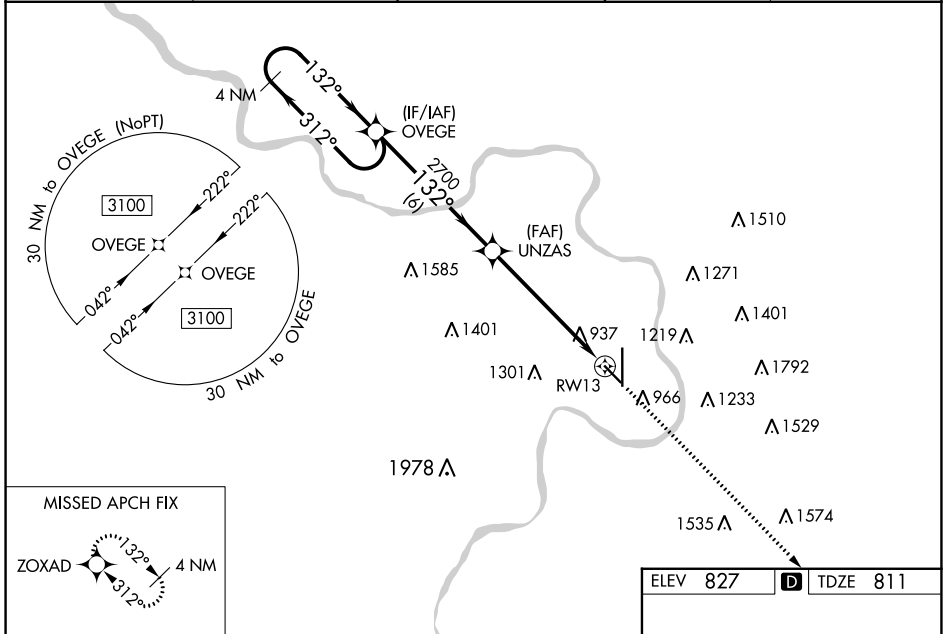
RNAV (GPS) RWY 13

ROSECRANS MEML (STJ)

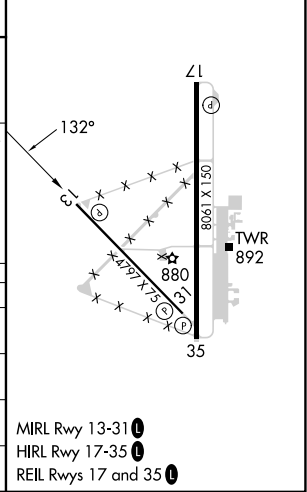
⚠ For uncompensated Baro-VNAV systems, LNAV/VNAV NA below -20°C (-4°F) or above 54°C (130°F). DME/DME RNP-0.3 NA. Straight-In minimums NA at night. Baro-VNAV and VDP NA when using Kansas City Intl altimeter setting. Helicopter visibility reduction below 3/4 SM NA. When local altimeter setting not received, use Kansas City Intl altimeter setting and increase all DA 97 feet, and LPV visibility 3/8 mile all Cats, LNAV/VNAV visibility 1/4 mile all Cats; increase all MDA 100 feet and Circling Cat C 1/2 mile, Cat D 1/4 mile.

MISSED APPROACH:
Climb to 3100 direct ZOAXD and hold.

| | | | | |
|-----------------------|---|---|-------------------------|-------------------------|
| ATIS 125.05 | ST. JOSEPH APP CON * 120.35 360.8 | ST. JOSEPH TOWER * 126.9 (CTAF) 239.0 | GND CON 121.9 | UNICOM 122.95 |
|-----------------------|---|---|-------------------------|-------------------------|



| | |
|----------|-------------------|
| ELEV 827 | D TDZE 811 |
|----------|-------------------|



| CATEGORY | A | B | C | D |
|-------------------|-----------------------|-------------------------------|-------------------------------|-------------------------------|
| LPV DA | | 1377-1 7/8 | 566 (600-1 1/8) | |
| LNAV/VNAV DA | | 1416-2 1/4 | 605 (600-2 1/4) | |
| LNAV MDA | 1580-1 769 (800-1) | 1580-1 1/4 769 (800-1 1/4) | 1580-2 1/2 | 769 (800-2 1/2) |
| C CIRCLING | 1580-1 753 (800-1) | 1580-1 1/4 753 (800-1 1/4) | 1620-2 1/2 793 (800-2 1/2) | 1640-2 3/4 813 (900-2 3/4) |

NC-3, 03 OCT 2024 to 31 OCT 2024

NC-3, 03 OCT 2024 to 31 OCT 2024