

|   |                        |   |
|---|------------------------|---|
| LOC/DME I-ROC<br><b>109.5</b><br>Chan <b>32</b> | APP CRS<br><b>280°</b> | Rwy Idg<br>5802<br>TDZE<br>550<br>Apt Elev<br>559 |
|---|------------------------|---|

# ILS or LOC RWY 28

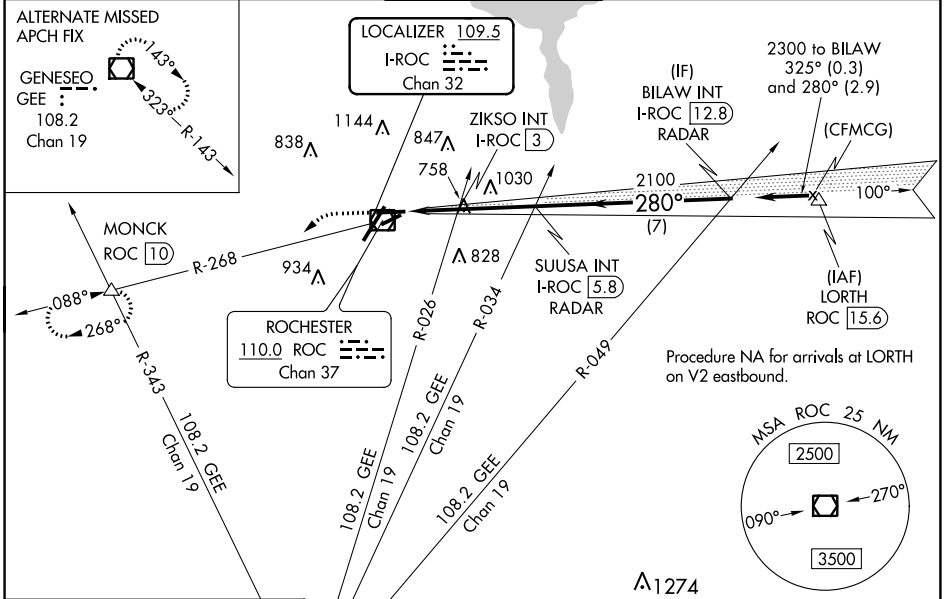
FREDERICK DOUGLASS/GREATER ROCHESTER INTL (ROC)

**⚠** Helicopter visibility reduction below RVR 4000 NA.  
**⚠** Multiple unshielded lights in final approach area.  
 For inop MALS, increase S-ILS 28 all Cats visibility to RVR 4500 and S-LOC 28 Cat A/B visibility to RVR 5500. For inop MALS with ZIKSO fix minimums, increase S-LOC 28 Cat A/B visibility to RVR 5500 and Cat C/D visibility to 1 1/2%.

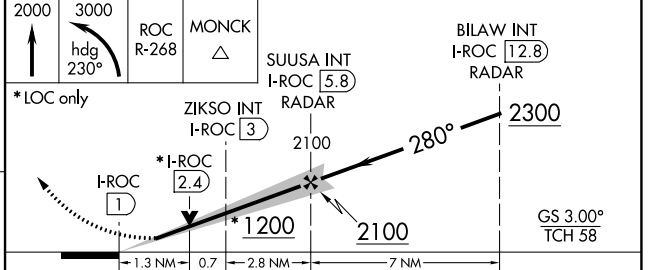
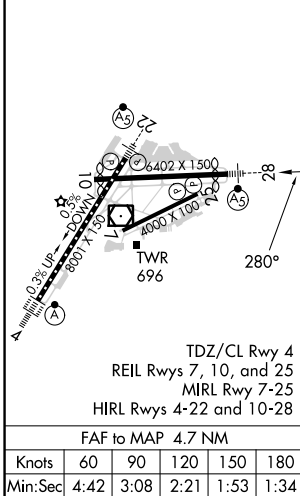
**MALS** 

**MISSED APPROACH:** Climb to 2000 then climbing left turn to 3000 on heading 230° and ROC VOR/DME R-268 to MONCK INT/ROC 10 DME and hold.

|                        |  |  |                         |                                 |
|------------------------|--|--|-------------------------|---------------------------------|
| ATIS<br><b>124.825</b> | ROCHESTER APP CON<br><b>119.55 269.6</b> | <b>ROCHESTER TOWER</b><br><b>118.3 254.3</b> | GND CON<br><b>121.7</b> | CLNC DEL<br><b>118.8 343.65</b> |
|------------------------|--|--|-------------------------|---------------------------------|



|                 |          |                 |
|-----------------|----------|-----------------|
| ELEV <b>559</b> | <b>D</b> | TDZE <b>550</b> |
|-----------------|----------|-----------------|



| CATEGORY   | A                    | B             | C                           | D                   |
|--|----------------------|---------------|-----------------------------|---------------------|
| S-ILS 28   | 821/40 271 (300-3/4) |               |                             |                     |
| S-LOC 28   | 1200/40              | 650 (700-3/4) | 1200-1 1/2 650 (700-1 1/2)  | 650 (700-1 1/2)     |
| <b>C</b> CIRCLING  | 1200-1               | 641 (700-1)   | 1500-2 3/4 941 (1000-2 3/4) | 1500-3 941 (1000-3) |
| <b>ZIKSO FIX MINIMUMS (DUAL VOR RECEIVERS OR DME REQUIRED)</b> |                      |               |                             |                     |
| S-LOC 28   | 1020/40              | 470 (500-3/4) | 1020/50                     | 470 (500-1)         |
| <b>C</b> CIRCLING  | 1060-1               | 501 (600-1)   | 1500-2 3/4 941 (1000-2 3/4) | 1500-3 941 (1000-3) |

NE-2, 08 AUG 2024 to 05 SEP 2024

NE-2, 08 AUG 2024 to 05 SEP 2024