

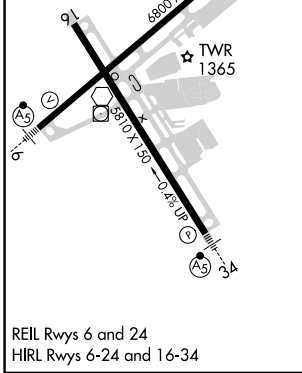
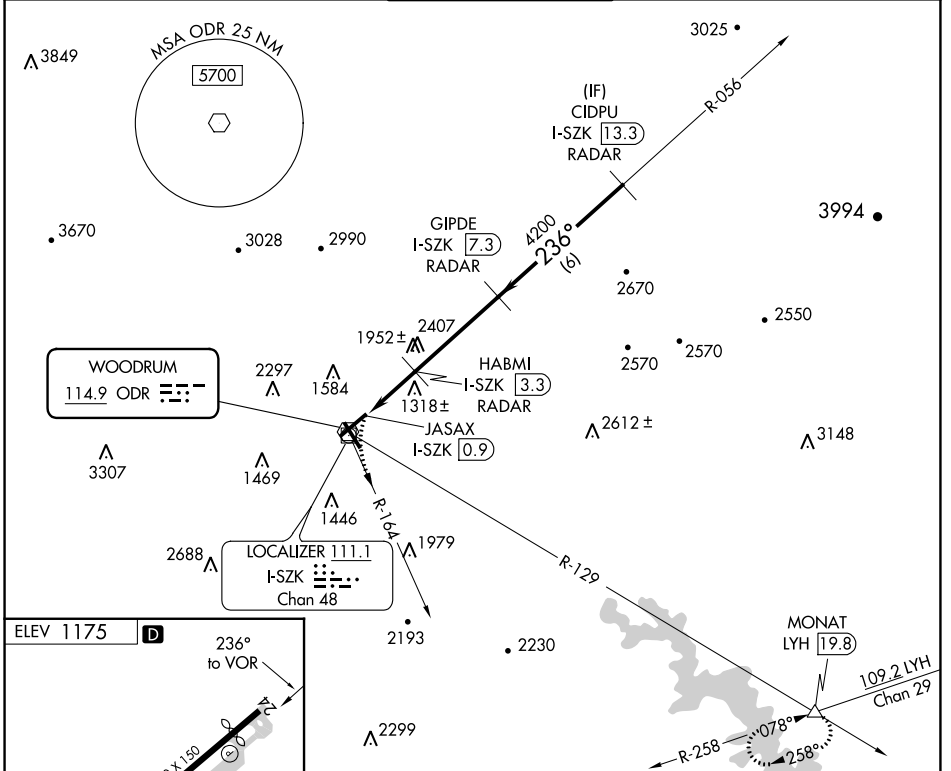
VOR ODR <b>114.9</b>	APP CRS <b>236°</b>	Rwy ldg TDZE Apt Elev <b>N/A</b> <b>N/A</b> <b>1175</b>
-------------------------	------------------------	--

# VOR/DME-A

ROANOKE/BLACKSBURG RGNL (WOODRUM FLD) (R.O.A)

RADAR required.		MISSED APPROACH: Climbing left turn to 4000 on ODR VOR R-164 and LYH VOR/DME R-258 to MONAT/LYH 19.8 DME and hold.		
<p>Circling NA northwest of Rwy 6-24. DME from I-SZK LDA. Simultaneous reception of ODR VOR and I-SZK DME required.</p>				

ATIS <b>132.375</b>	ROANOKE APP CON <b>126.9 339.8</b>	ROANOKE TOWER <b>118.3 257.8</b>	GND CON <b>121.9 257.8</b>	CLNC DEL <b>119.7</b>
------------------------	---------------------------------------	-------------------------------------	-------------------------------	--------------------------



4000 ODR R-164	LYH R-258	MONAT	GIPDE I-SZK 7.3 RADAR	CIDPU I-SZK 13.3 RADAR	
CATEGORY		A	B	C	D
<input checked="" type="checkbox"/> CIRCLING		1740-1	565 (600-1)	2420-3 1245 (1300-3)	2800-3 1625 (1700-3)

# VOR/DME-A

NE-3, 08 AUG 2024 to 05 SEP 2024

NE-3, 08 AUG 2024 to 05 SEP 2024