

LOC/DME I-SZK 111.1 Chan 48	APP CRS 072°	Rwy Idg TDZE 1175 Apt Elev 1175
------------------------------------------	------------------------	-----------------------------------------------------

LDA Z RWY 6

ROANOKE/BLACKSBURG RGNL (WOODRUM FLD) (R.O.A)

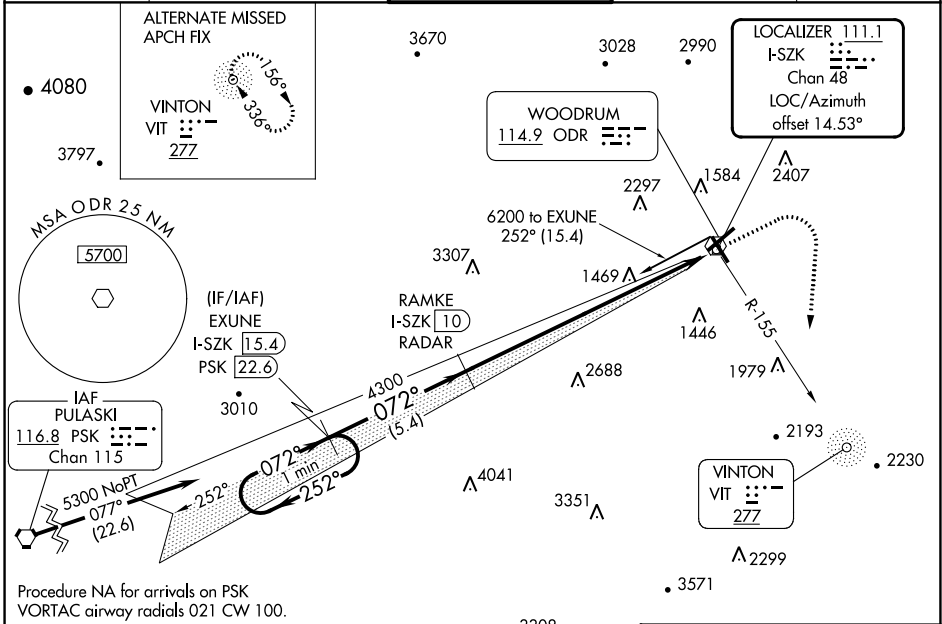
M For inop MALSR, increase S-LDA/GS 6 all Cats visibility to 7/8 mile. Missed approach requires a minimum climb of 350 feet per NM to 3600, if unable to meet climb gradient, see LDA Y Rwy 6.

13°C



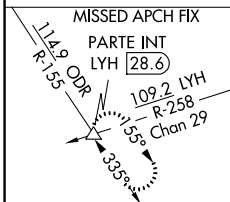
MISSED APPROACH: Climb to 1800 then climbing right turn to 5000 on ODR VOR R-155 to PARTE INT/LYH 28.6 DME and hold, continue climb-in-hold to 5000.

ATIS 132.375	ROANOKE APP CON 126.9 339.8	ROANOKE TOWER 118.3 257.8	GND CON 121.9 257.8	CLNC DEL 119.7
------------------------	---------------------------------------	-------------------------------------	-------------------------------	--------------------------

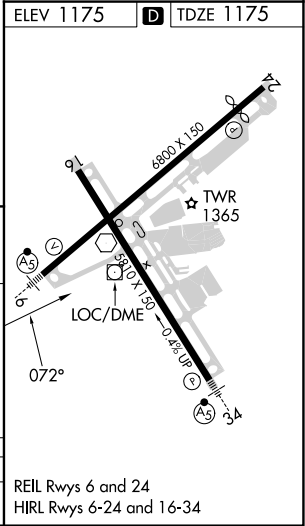
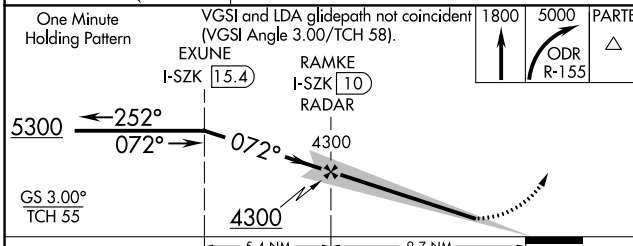


NE-3, 08 AUG 2024 to 05 SEP 2024

NE-3, 08 AUG 2024 to 05 SEP 2024



LDA/GLIDE SLOPE DME OR RADAR REQUIRED



CATEGORY	A	B	C	D
S-LDA/GS 6		1475-3/4	300 (300-3/4)	

LDA Z RWY 6