

(WADOL.WADOL4) 24025

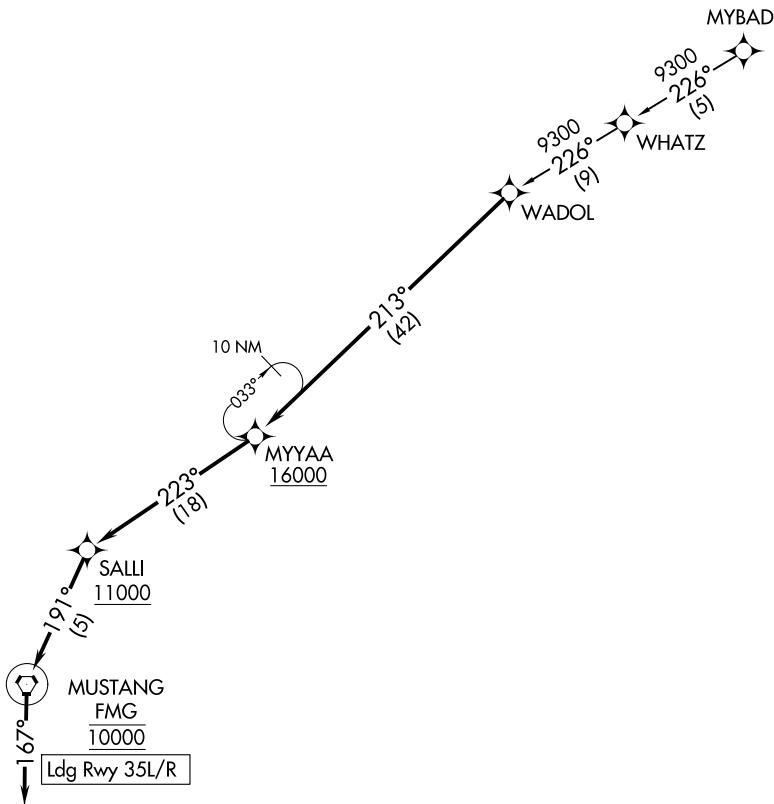
# WADOL FOUR ARRIVAL (RNAV)

AL-346 (FAA)

RENO/TAHOE INTL (RNO)  
RENO, NEVADA

NORCAL APP CON  
126.3 353.9  
D-ATIS  
135.8 363.0  
RENO TOWER  
118.7 257.8

RNAV 1 - GPS.  
RADAR required.



SW-4, 31 OCT 2024 to 28 NOV 2024

SW-4, 31 OCT 2024 to 28 NOV 2024

NOTE: GPS required

CAUTION: Intense glider activity to FL180.

NOTE: Chart not to scale.

## ARRIVAL ROUTE DESCRIPTION

### MYBAD TRANSITION (MYBAD.WADOL4)

From WADOL on track 213° to cross MYAA at or above 16000, then on track 223° to cross SALLI at or above 11000, then on track 191° to cross FMG VORTAC at 10000, then on heading 167°. Expect assigned instrument approach Rwy 35L/R or RADAR vectors to final approach course.

# WADOL FOUR ARRIVAL (RNAV)

(WADOL.WADOL4) 25JAN24

RENO, NEVADA  
RENO/TAHOE INTL (RNO)