

RNAV (RNP) Z RWY 35R

RENO/TAHOE INTL (RNO)

APP CRS	Rwy Idg	9000
347°	TDZE	4408
	Apt Elev	4415

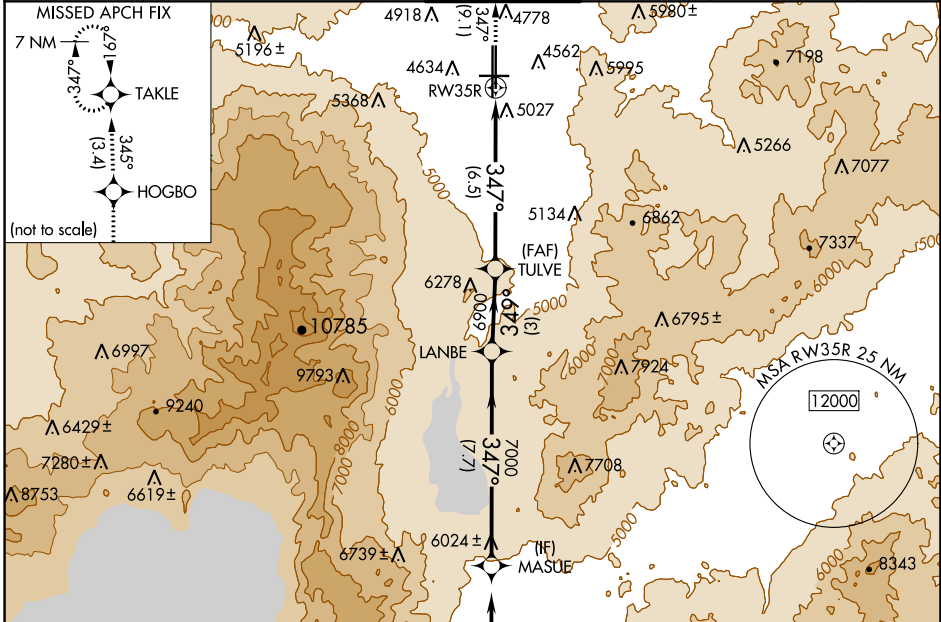
RNP AR APCH - GPS.

For uncompensated Baro-VNAV systems, procedure NA below -9°C or above 34°C.

-13°C

MISSED APPROACH: Climb to 11000 on track 347° to HOGBO and on track 345° to TAKLE and hold, continue climb-in-hold to 11000.
 *Missed approach requires minimum climb of 301 feet per NM to 7150.

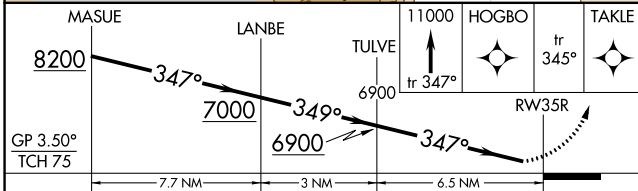
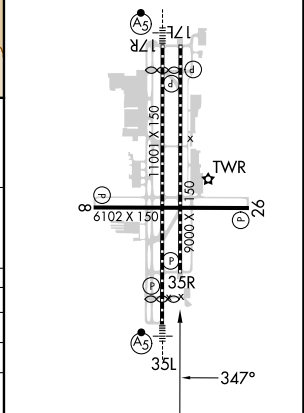
D-ATIS	NORCAL APP CON	RENO TOWER	GND CON	CLNC DEL	CPDLC
135.8 363.0	119.2 279.55 126.3 353.9	118.7 257.8	121.9 348.6	124.9 370.85	



SW-4, 03 OCT 2024 to 31 OCT 2024

SW-4, 03 OCT 2024 to 31 OCT 2024

ELEV 4415 **D** TDZE 4408
 REIL Rwy 8, 17L, 26, and 35R
 HIRL Rwy 17R-35L and 17L-35R
 MIRL Rwy 8-26



CATEGORY	A	B	C	D
RNP 0.11 DA*	4762-1		354 (400-1)	
RNP 0.30 DA	5349-2½		941 (1000-2½)	

AUTHORIZATION REQUIRED