

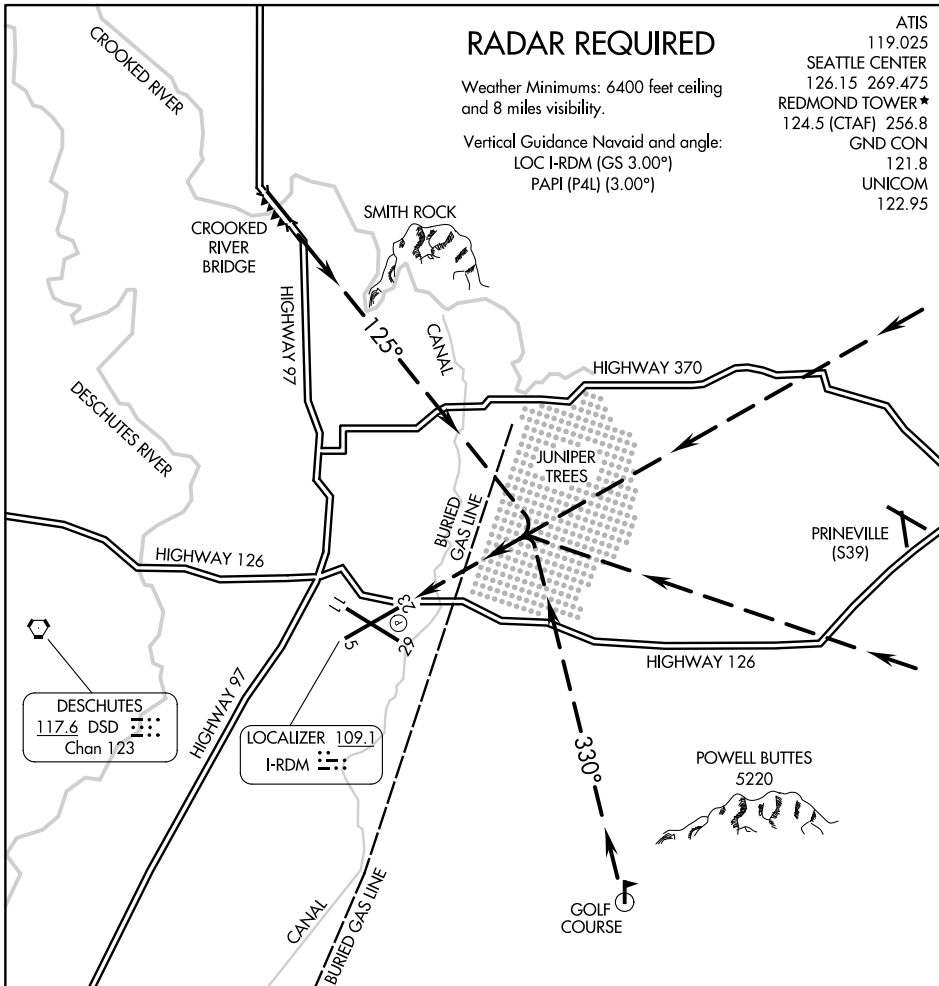
JUNIPER VISUAL RWY 23

RADAR REQUIRED

Weather Minimums: 6400 feet ceiling
and 8 miles visibility.

Vertical Guidance Navaid and angle:
LOC I-RDM (GS 3.00°)
PAPI (P4L) (3.00°)

ATIS
119.025
SEATTLE CENTER
126.15 269.475
REDMOND TOWER *
124.5 (CTAF) 256.8
GND CON
121.8
UNICOM
122.95



NW-1, 03 OCT 2024 to 31 OCT 2024

NW-1, 03 OCT 2024 to 31 OCT 2024

JUNIPER VISUAL APPROACH RWY 23

PROCEDURE NOT AUTHORIZED AT NIGHT

JUNIPER VISUAL RWY 23