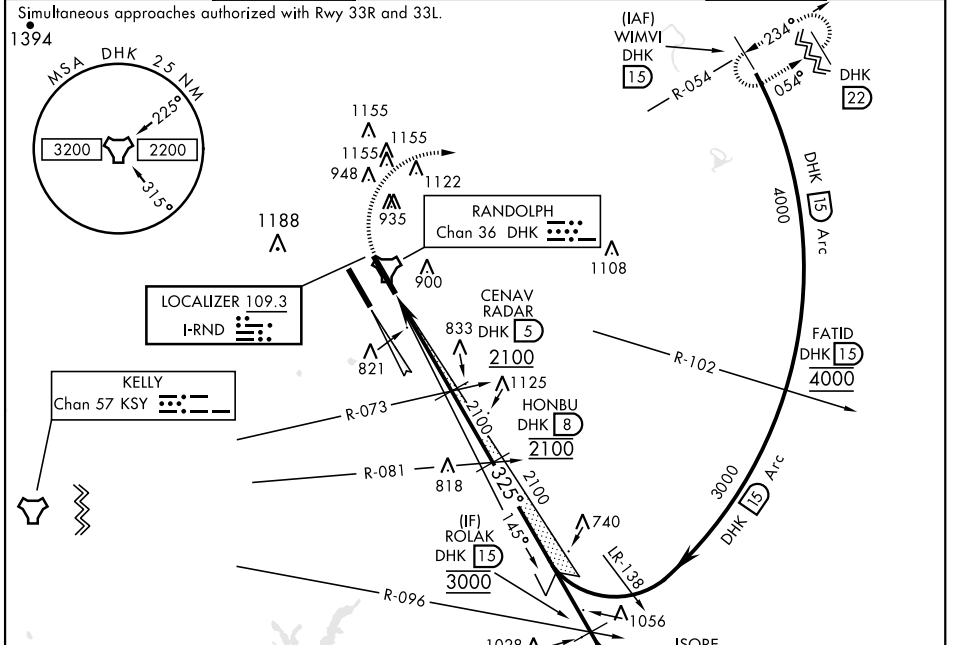


ILS or LOC Y RWY 33R

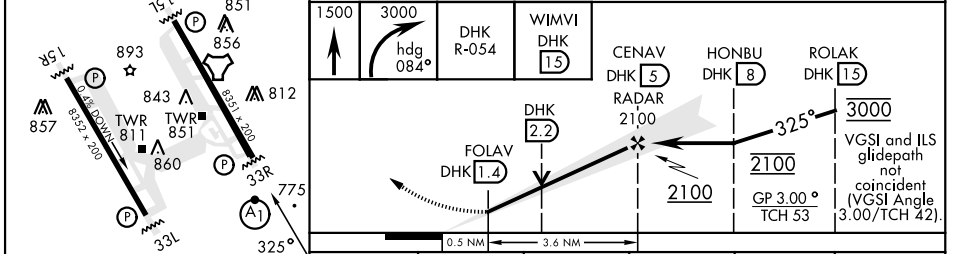
LOC I-RND 109.3	APCH CRS 325°	Rwy ldg TDZE Arprt Elev 8351 733 761	[USAF]	RANDOLPH AFB (KRND)
---------------------------	-------------------------	--	--------	---------------------

RADAR or DME required		ALSIF-1 A1	MISSED APPROACH: Climb to 1500, then climbing right turn hdg 084° to 3000. Intercept DHK R-054 to WIMVI and hold.
* When ALS inop, increase RVR to 40 and vis to ¼ mile. ** When ALS inop, increase CAT AB RVR to 55, vis to 1 mile; CAT CDE vis to 1½ miles. *** Circling not authorized SW of Rwy 15L-33R.			

ATIS ★ 290.525	SAN ANTONIO APP CON 128.05 318.1	TOWER ★ 128.25 294.7	GND CON 119.65 275.8	CLNC DEL (RWY 15L-33R) 338.35	HANGOVER ATIS ★ 327.8	HANGOVER TOWER ★ 120.5 291.1	HANGOVER GND CON 124.75 353.75
--------------------------	--	--------------------------------	--------------------------------	---	---------------------------------	--	--



EMERG SAFE ALT 100 NM 4100	
ELEV 761	TDZE 733



CATEGORY	A	B	C	D	E
S-ILS 33R *	933/24		200	(200-½)	
S-LOC 33R **	1180/24	447 (500-½)	1180/45	447 (500-¾)	
CIRCLING ***	1240-1	479 (500-1)	1260-1½ 499 (500-1½)	1800-3	1039 (1100-3)

ILS or LOC Y RWY 33R

SC-3, 31 OCT 2024 to 28 NOV 2024

SC-3, 31 OCT 2024 to 28 NOV 2024