

ILS or LOC RWY 33L

LOC I-VQE 111.1	APCH CRS 325°	Rwy Idg TDZE Arpt Elev 8352 733 761
---------------------------	-------------------------	---

[USAF]

RANDOLPH AFB (KRND)

RADAR or DME required

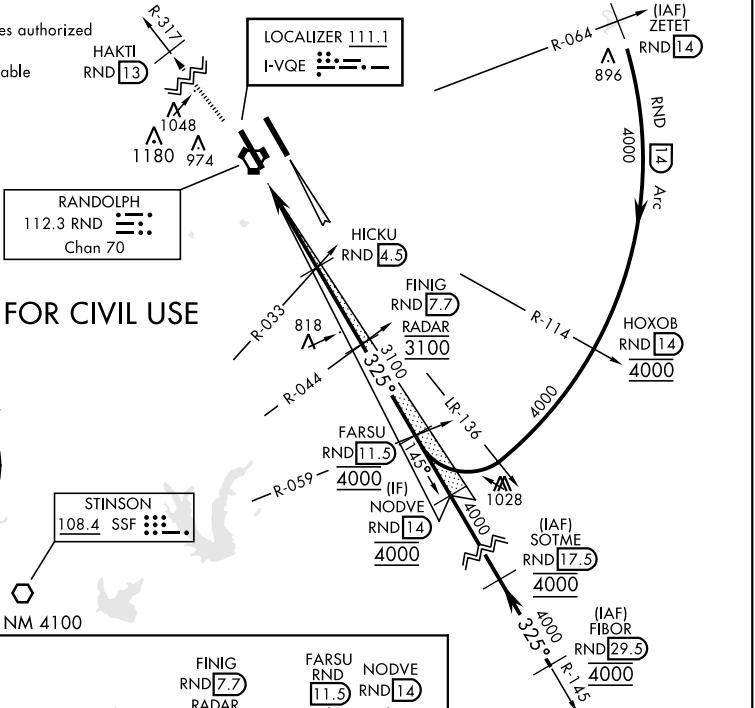
* Circling not authorized NE of Rwy 15R-33L.

MISSED APPROACH: Climb to 3000 out RND VORTAC R-317 to 13 DME (HAKTI). Expect ATC instructions.

ATIS★ 290.525	SAN ANTONIO APP CON 128.05 318.1	TOWER★ 128.25 294.7	GND CON 119.65 275.8	CLNC DEL (RWY 15L-33R) 338.35	HANGOVER ATIS★ 327.8	HANGOVER TOWER★ 120.5 291.1	HANGOVER GND CON 124.75 353.75
-------------------------	--	-------------------------------	--------------------------------	---	--------------------------------	---------------------------------------	--

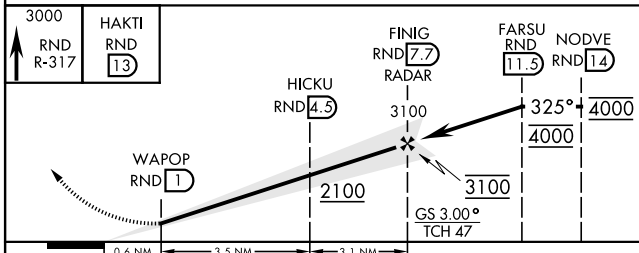
1348

Simultaneous approaches authorized with Rwy 33L and 33R.
Coupled approach unusable below 953'.



NOT FOR CIVIL USE

EMERG SAFE ALT 100 NM 4100



CATEGORY	A	B	C	D	E
S-ILS 33L	933/40		200	(200-¾)	
S-LOC 33L	1080/55		347	(400-1)	
CIRCLING*	1240-1 479 (500-1)	1280-1 519 (600-1)	1500-2 739 (800-2)	1800-3	1039 (1100-3)
WITHOUT LAST STEP DOWN FIX					
S-LOC 33L	1140/55	407 (400-1)	1140/60	407	(400-1½)
CIRCLING*	1240-1 479 (500-1)	1280-1 519 (600-1)	1500-2 739 (800-2)	1800-3	1039 (1100-3)

ELEV 761	TDZE 733
ALS Rwy 15L nstd len 2100'	
HIRL all rwys	
FAF to MAP 6.7 NM	
Knots	60 90 120 150 180
Min:Sec	6:42 4:28 3:21 2:41 2:14

ILS or LOC RWY 33L

SC-3, 31 OCT 2024 to 28 NOV 2024

SC-3, 31 OCT 2024 to 28 NOV 2024