

HI-TACAN B

TACAN DHK Chan 36	APCH CRS 326°	Rwy ldg TDZE N/A Arprt Elev 761
--------------------------	----------------------	--

[USAF]

RANDOLPH AFB (KRND)

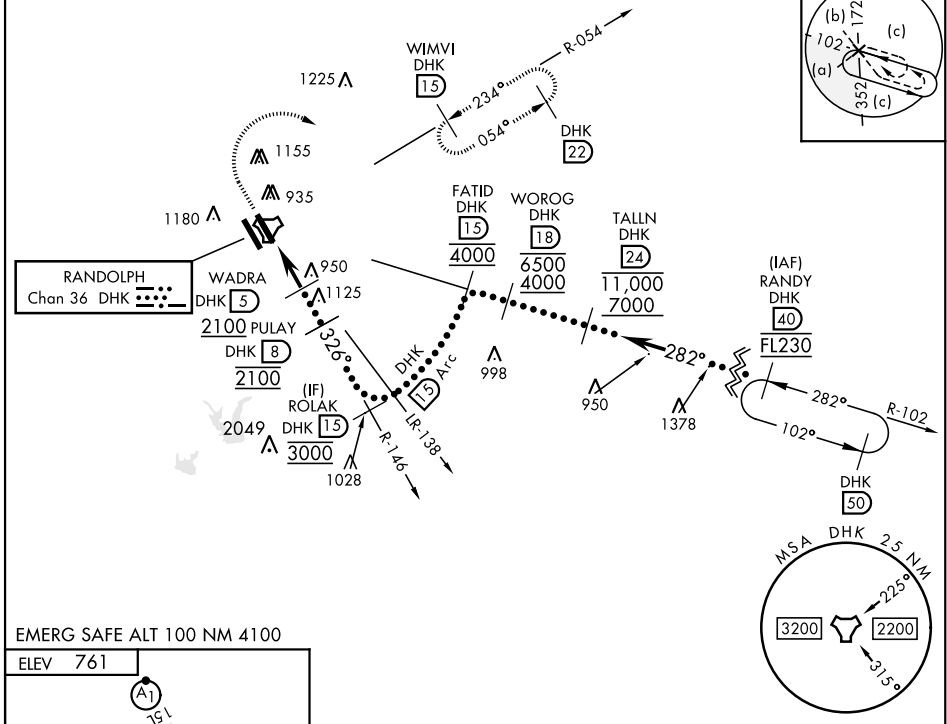
RADAR required for missed approach monitoring

* Circling not authorized SW of Rwy 15L-33R.

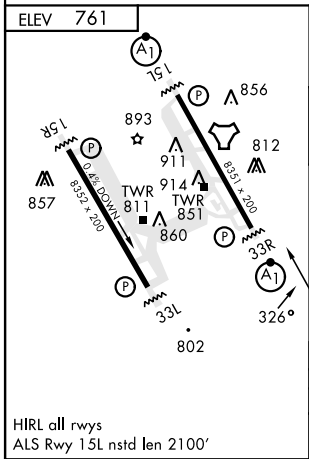
MISSED APPROACH: Track 327° to 1500, then climbing right turn heading 084° to 3000. Intercept DHK TACAN R-054 direct WIMVI and hold.

ATIS ★ 290.525	SAN ANTONIO APP CON 128.05 318.1	TOWER ★ 128.25 294.7	GND CON 119.65 275.8	CLNC DEL (RWY 15L-33R) 338.35	HANGOVER ATIS ★ 327.8	HANGOVER TOWER ★ 120.5 291.1	HANGOVER GND CON 124.75 353.75
-----------------------	---	-----------------------------	-----------------------------	--------------------------------------	------------------------------	-------------------------------------	---------------------------------------

•1585



EMERG SAFE ALT 100 NM 4100



ELEV 761	1500	3000	WIMVI DHK 15
↑ tr 327°	↻ hdg 084°	DHK R-054	
<p>JUNAB DHK 1.4 → WADRA DHK 5 → PULAY DHK 8 → 3000</p> <p>2100 → 2100 → 3000</p>			
CATEGORY	C	D	E
Ⓢ CIRCLING*	1260-1½ 499 (500-1½)	1800-3	1039 (1100-3)

HI-TACAN B

SC-3, 31 OCT 2024 to 28 NOV 2024

SC-3, 31 OCT 2024 to 28 NOV 2024